

JUKI

Cylinder-Bed, 1-Needle, Unison-Feed Lockstitch
Machine with Automatic Thread Trimmer

筒型一本針本縫総合送り自動糸切りミシン

DSC-245・DSC-245-4

DSC-245-5・DSC-245-6

PARTS LIST

HOW TO MAKE USE OF THIS PARTS LIST

パーツリストの見方

1. The part numbers of parts shown in the figure indicate the corresponding numbers (Ref. No.) shown by the Index.
図に示された部品の品番は、図にふられているNo.(Ref.No.)に対応するインデックスによって、その品番がわかります。

2. Explanation of codes

記号の説明

1) Codes on the "Note" column

"注記" 欄の記号

- ① ☆..... means this part is changed from the previous parts list.
前回のパーツリストに対して今回変更された部品を意味します。
- ② #01..... refer to the "Note" explanation at bottom of page.
001 ページ下の "注記" の説明を参照して下さい。

2) Codes on the "E.C. (Engineering change)" column

"変更年月" 欄の記号

- ① A.10/83.... Added from October, 1983
1983年10月より追加された。
- ② D.10/83.... Obsolete from October, 1983
1983年10月より削除された。

③ When previous parts (Obsoleted part) and new parts (Added parts) are not interchangeable with each other:
部品の互換性がない変更の場合

In this case, even obsoleted part (D.) can be ordered with the obsoleted part number, so select the parts with changed dates and place your orders.
この場合は削除(D)された品番でもご注文できますから、変更年月により、いずれかの部品を選択してご注文下さい。

Example (例)

| Ref. No. | Note 注記 | Part No. 品番 | Description | E.C. 変更年月 | 品名 | Amt. Req. 数量 |
|----------|---------|-----------------|-------------|-----------|---------------|--------------|
| 1 | ☆ | B1401-100-000 | Needle bar | D.10/83 | ハリホー | - |
| 1-1 | ☆ | B1401-100-000-A | Needle bar | A.10/83 | ハリホー | 1 |
| 2 | ☆ | B1105-200-000 | Frame cover | D.10/83 | B1105-300-000 | - |
| | ☆ | B1105-300-000 | Frame cover | A.10/83 | フレームカバー | 1 |

④ In case when previous parts and new part are interchangeable with each other:
部品の互換性がある場合の変更

In this case the new part number is replaced on the "品名 (Japanese)" column of the previous parts, so please order by the new part number.
この場合は、旧部品の和文品名欄にそれにかわる新しい品番が記入してありますので、新しい品番でご注文下さい。

⑤ C.10/83

| | | | | | | |
|---|---|---------------------------|-------------|---------|--------------------------|---|
| 1 | ☆ | B1105-500-000 | Frame cover | C.10/83 | B1105-600-000 | 1 |
| | | ↑ Correct No. 正しい品番 | | | ↑ Wrong No. 誤り品番 | |

Please order by the correct part number.
正しい品番でご注文下さい。

⑥ M.10/83 The amount required is changed from October, 1983
The new amount required is shown in the "Amt. Req." column.
1983年10月より数量が変更になった。この場合数量欄には新しい数量が表示してあります。

3) Codes on the "Amt. Req." column

"数量" 欄の記号

- ① 2 Indicates amount required is 2.
数量、2個を表わします。
- ② 2.0 Indicates length in meters. (unit is meter)
長さ、2メートルを表わします。(単位はメートルです)
- ③ - Indicates parts obsoleted from the parts list.
このパーツリストから削除された部品です。
- ④ (1) Indicates sub parts which construct the assembly part.
Assembly part is shown as "asm." and クミ in Japanese, in the "Description" column.
組部品を構成している子部品を表わします。組部品は品名欄に英文で "asm." 和文でクミと表示してあります。

When Ordering The Spare Parts:

In order to ensure that we deliver the correct parts to you, please clearly state when ordering the corresponding PART NUMBER (ex. B1109-012-A00) and also the PARTS LIST NUMBER (ex. 0010-01, given at the top right of the cover) or the MACHINE SERIAL NUMBER, because there are some parts which have been changed.

補用部品注文の際のご注意

このパーツリストに記載されている補用部品をご注文の際は、部品の番号(例えば、B1109-012-A00)でご注文下さい。合わせて、ご覧のパーツリストの管理番号(表紙右下、例えば、No.0010-01)又は、機械番号をご連絡頂ければ幸いです。又、改良のため部品の一部が変更になる場合がありますのでご了承下さい。

CONTENTS

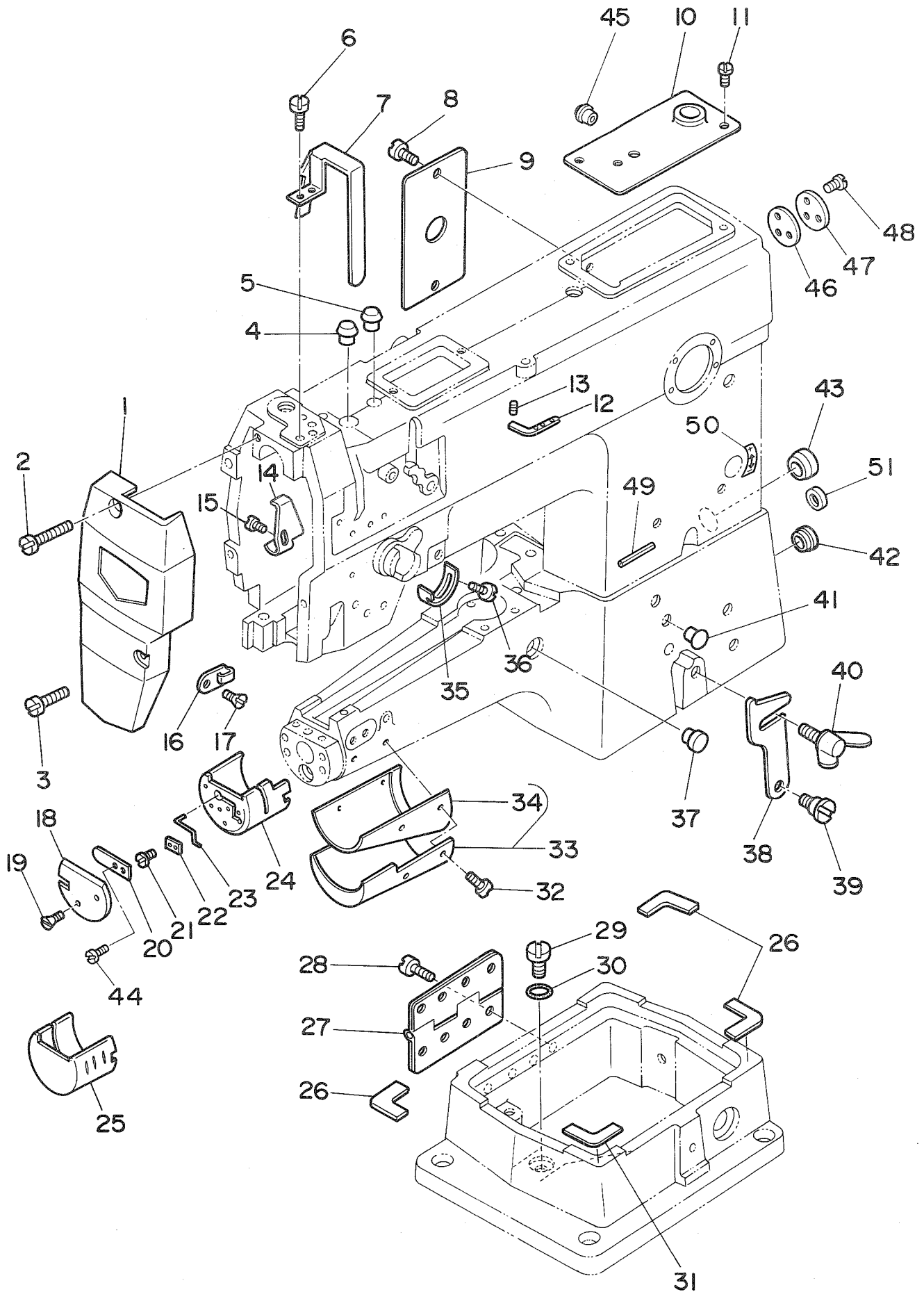
目 次

| | |
|---|----|
| 1. MACHINE FRAME & MISCELLANEOUS COVER COMPONENTS (1) | 1 |
| 頭部・外装関係 (1) | |
| 2. MACHINE FRAME & MISCELLANEOUS COVER COMPONENTS (2) | 3 |
| 頭部・外装関係 (2) | |
| 3. MAIN SHAFT & NEEDLE BAR COMPONENTS | 5 |
| 上軸・針棒関係 | |
| 4. PRESSER BAR & THREAD TAKE-UP COMPONENTS | 7 |
| 押え棒・天秤関係 | |
| 5. THREAD TRIMMER COMPONENTS | 9 |
| 糸切り装置関係 | |
| 6. WALKING FOOT COMPONENTS | 11 |
| 上送り関係 | |
| 7. AUTOMATIC REVERSE FEED COMPONENTS | 13 |
| 逆送り関係 | |
| 8. FEED MECHANISM COMPONENTS | 15 |
| 送り関係 | |
| 9. OIL LUBRICATION COMPONENTS | 17 |
| 給油関係 | |
| 10. KNEE PRESS PLATE COMPONENTS | 19 |
| 膝上げ装置関係 | |
| 11. BOBBIN WINDER & BELT COVER COMPONENTS | 20 |
| 糸巻・ベルトカバー関係 | |
| 12. THREAD STAND COMPONENTS | 21 |
| 糸立装置関係 | |
| 13. TABLE COMPONENTS | 22 |
| 脚卓関係 | |
| 14. EXCLUSIVE PARTS FOR DSC-245 | 23 |
| DSC-245専用部品 | |
| 15. CORD COMPONENTS (FOR DSC-245-4) | 23 |
| コード関係(DSC-245-4)用 | |
| 16. CORD COMPONENTS (FOR DSC-245-5) | 23 |
| コード関係(DSC-245-5)用 | |
| 17. CORD COMPONENTS (FOR DSC-245-6) | 25 |
| コード関係(DSC-245-6)用 | |
| NUMERICAL INDEX OF PARTS | 26 |
| 索引 | |

Illustration of this parts list is based on the model DSC-245-4-1B

このパーツリストは、DSC-245-4-1Bを基本にイラストを作成してあります。

1. MACHINE FRAME & MISCELLANEOUS COVER COMPONENTS (1)
 頭部・外装関係 (1)

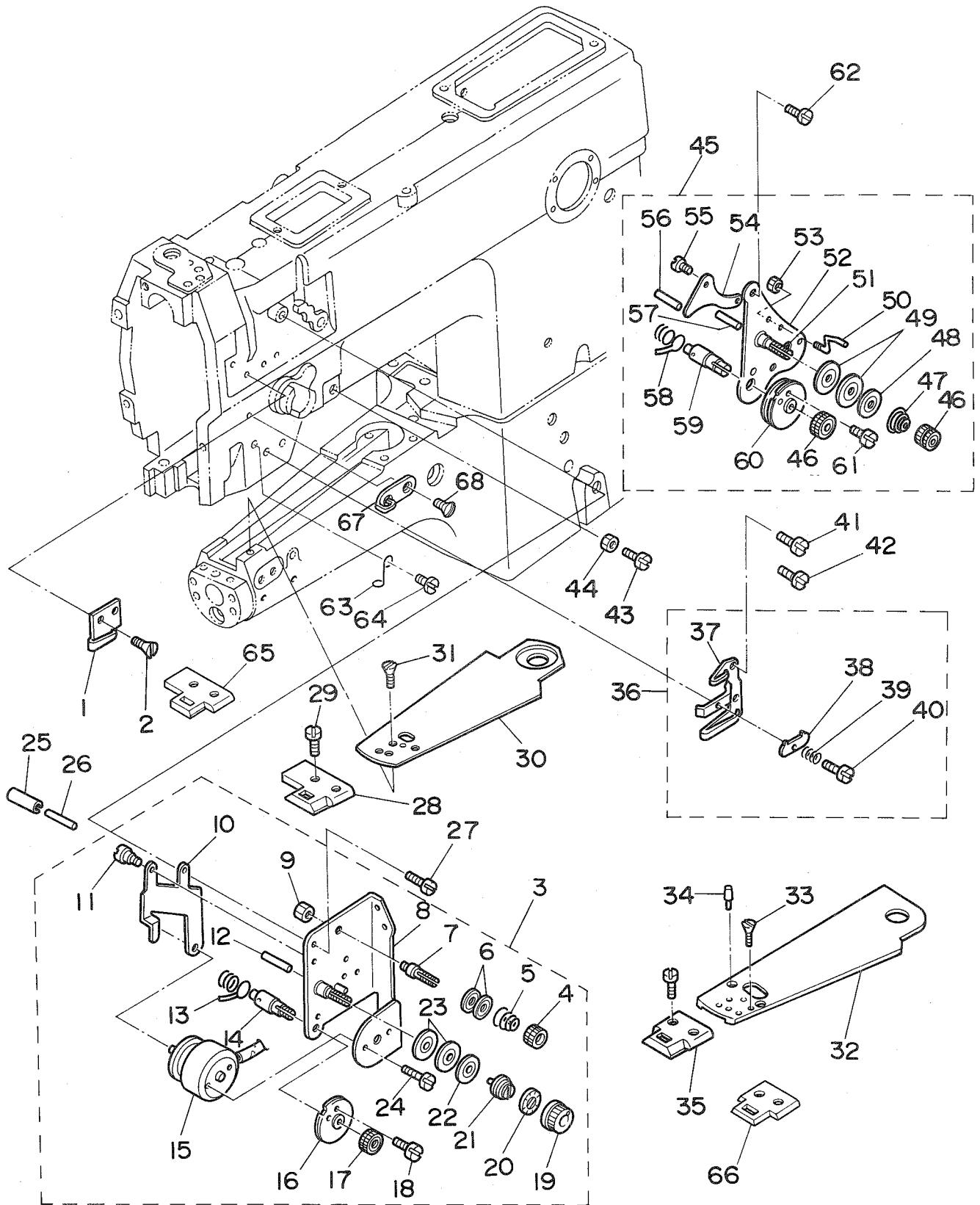


| REF. NO. | NOTE | PART NO. | DESCRIPTION | ヒ | ン | メ | イ | AMT. |
|----------|------|---------------|--------------------------------|----|---|---|----|------|
| 1 | | B1121-245-0A0 | FACE PLATE ASM. | | | | | 1 |
| 2 | | SS-6092120-SP | SCREW 9/64-40 L=21.2 | メン | イ | タ | クミ | 1 |
| 3 | | SS-7110710-SP | SCREW 11/64-40 L=7 | ヒ | ラ | ネ | ジ | 1 |
| 4 | | TA-0500601-M0 | PLUG D=5X5.4 L=6 | マ | ル | ヒ | ラ | 1 |
| 5 | | TA-1050504-R0 | RUBBER PLUG | ト | メ | セ | ン | 1 |
| 6 | | SS-7150940-SP | SCREW 15/64-28 L=9 | マ | ル | ヒ | ラ | 1 |
| 7 | | D1158-241-E00 | THREAD TAKE-UP LEVER COVER | テ | ン | ヒ | ン | 1 |
| 8 | | SS-7110710-SP | SCREW 11/64-40 L=7 | マ | ル | ヒ | ラ | 1 |
| 9 | | B1118-241-H00 | SIDE PLATE | マ | ト | イ | タ | 1 |
| 10 | | B1150-245-0A0 | TOP COVER ASM. | テ | ン | ハ | ン | 1 |
| 11 | | SS-7110710-SP | SCREW 11/64-40 L=7 | マ | ル | ヒ | ラ | 1 |
| 12 | #01 | B1128-522-000 | THREE HOLE THREAD EYELET | ミ | ツ | メ | イ | 1 |
| 13 | #01 | SS-8110510-SP | SCREW 11/64-40 L=5 | ト | メ | セ | ン | 1 |
| 14 | | B1140-051-000 | TAKE-UP OIL SPLASHER | テ | ン | ヒ | ン | 1 |
| 15 | | SS-3090520-SP | SCREW 9/64-40 L=4.5 | マ | ル | ネ | ジ | 1 |
| 16 | #01 | B1130-051-000 | FRAME THREAD GUIDE, MIDDLE | イ | ト | ア | ン | 1 |
| 17 | #01 | SS-2090710-SP | SCREW 9/64-40 L=7 | マ | ル | サ | ラ | 1 |
| 18 | | D2429-245-E00 | PICKER COVER | ピ | ッ | カ | ー | 1 |
| 19 | | D2436-245-E00 | SCREW | ピ | ッ | カ | ー | 1 |
| 20 | | D2426-245-E00 | SPRING | ピ | ッ | カ | ー | 1 |
| 21 | | D2435-245-E00 | SCREW | ピ | ッ | カ | ー | 1 |
| 22 | | D2425-245-E00 | PICKER HOLDER PLATE | ピ | ッ | カ | ー | 1 |
| 23 | | D2424-245-E00 | PICKER | ピ | ッ | カ | ー | 1 |
| 24 | | D1171-245-E00 | HOOK COVER | カ | マ | カ | ハ | 1 |
| 25 | #01 | B1171-245-000 | HOOK COVER | カ | マ | カ | ハ | 1 |
| 26 | | B1183-245-00A | GASKET, A | ス | ペ | ー | サ | 1 |
| 27 | | B1128-246-000 | HINGE | チ | ヨ | ウ | ハ | 1 |
| 28 | | SM-6081552-TP | SCREW M8 L=15 | ロ | ツ | カ | ク | 1 |
| 29 | | SS-7680870-SP | SCREW 9/32 L= 8.0 | マ | ル | ヒ | ラ | 1 |
| 30 | | RO-0611801-00 | RUBBER RING | リ | ン | ク | ワ | 1 |
| 31 | | B1183-245-00B | GASKET, B | ス | ペ | ー | サ | 1 |
| 32 | | SS-2090710-SP | SCREW 9/64-40 L=7 | マ | ル | サ | ラ | 1 |
| 33 | | B1178-245-0A0 | CYLINDER COVER ASM. | シ | リ | ン | タ | 1 |
| 34 | | B1179-245-000 | COVER GASKET | シ | リ | ン | タ | 1 |
| 35 | | B3138-512-000 | TAKE-UP SPRING ADJUSTING PLATE | イ | ト | リ | ハ | 1 |
| 36 | | SS-7090520-SP | SCREW 9/64-40 L= 4.5 | マ | ル | ヒ | ラ | 1 |
| 37 | | TA-1250406-R0 | RUBBER PLUG | ト | メ | セ | ン | 1 |
| 38 | | B1117-246-000 | HOOK | カ | ケ | カ | ネ | 1 |
| 39 | | SD-0800352-SP | HINGE SCREW D= 8 H= 3.5 | タ | ン | ネ | ジ | 1 |
| 40 | | B1116-246-000 | WING BOLT | カ | ケ | カ | ネ | 1 |
| 41 | | TA-0750704-R0 | RUBBER PLUG | ト | メ | セ | ン | 1 |
| 42 | | TA-2100904-R0 | RUBBER PLUG | ト | メ | セ | ン | 1 |
| 43 | | B1180-245-000 | PLUG | ト | メ | セ | ン | 1 |
| 44 | | SS-5060310-SP | SCREW 3/32-56 L=2.8 | ト | ラ | ス | ネ | 1 |
| 45 | | TA-0550604-R0 | RUBBER PLUG | ト | メ | セ | ン | 1 |
| 46 | | B1182-245-000 | BUSHING COVER GASKET | ガ | ム | ジ | ン | 1 |
| 47 | | B1181-245-000 | BUSHING COVER, REAR | ガ | ム | ジ | ン | 1 |
| 48 | | SS-7060610-SP | SCREW 3/32-56 L= 5.5 | マ | ル | ヒ | ラ | 1 |
| 49 | | PS-0600602-KP | OIL TUBE | ス | プ | リ | ン | 1 |
| 50 | | B3522-245-000 | OIL SEAL | カ | マ | リ | ヨ | 1 |
| 51 | | TA-1120804-R0 | RUBBER PLUG | ト | メ | セ | ン | 1 |

Note(注記)#01.....For DSC-245

DSC-245用

2. MACHINE FRAME & MISCELLANEOUS COVER COMPONENTS (2)
 頭部・外装関係 (2)



| REF.NO. | NOTE | PART NO. | DESCRIPTION | ヒンメイ | AMT. |
|---------|------|---------------|----------------------------------|--|------|
| 1 | | B1129-563-000 | FRAME THREAD GUIDE, UPPER | イトアンナイ ウエ | 1 |
| 2 | | SS-2090710-SP | SCREW 9/64-40 L=7 | マルサラネジ 9/64-40 L=7 | 2 |
| 3 | | 103-20075 | TENSION POST ASM. | イトチヨ-シ クミ | 1 |
| 4 | | B3216-047-000 | BOBBIN WINDER TENSION NUT | イトチヨ-シ ナツト | (1) |
| 5 | | D3168-555-HOB | SPRING | タ ^イ 11 イトチヨウシハ ^ネ | (1) |
| 6 | | B3214-047-000 | BOBBIN WINDER TENSION DISC | イトチヨ-シ サラ | (2) |
| 7 | | 101-24204 | THREAD TENSION POST, A | タ ^イ 11イトチヨ-シホ ^ネ - A | (1) |
| 8 | | 103-20059 | TENSION POST BASE ASM. | イトチヨウシタ クミ | (1) |
| 9 | | NS-6110310-SP | NUT 11/64-40 | ロツカクナツト 11/64-40 | (1) |
| 10 | | 103-20505 | TENSION RELEASE LEVER | イトユルメ イタ | (1) |
| 11 | | SD-0470281-SP | HINGE SCREW D=4.7 H=2.8 | タ ^ン ネジ D=4.7 H=2.8 | (2) |
| 12 | | B3127-051-000 | TENSION RELEASE PIN, SHORT | イトユルメ ピ ^ン | (1) |
| 13 | | B3128-051-000 | THREAD TAKE-UP SPRING, A | イトトリハ ^ネ | (1) |
| 14 | | 103-20109 | SCREW STUD | イトトリハ ^ネ ネジ ^ク | (1) |
| 15 | | 103-20703 | TENSION RELEASE SOLENOID | イトユルメ ソレノイ ^ト | (1) |
| 16 | | B3137-527-0A0 | THREAD TAKE-UP SPRING GUIDE ASM. | イトトリハ ^ネ アンナイ クミ | (1) |
| 17 | | B3125-012-000 | THREAD TENSION STUD NUT | イトチヨ-シ ナツト | (1) |
| 18 | | SS-3090710-TP | SCREW 9/64-40 L=7 | マルネジ 9/64-40 L=7 | (1) |
| 19 | | B3119-771-000 | TENSION NUT | イトチヨ-シナツト | (1) |
| 20 | | B3120-125-000 | TENSION DISC STOPPER | イトチヨ-シサラ カイテント ^メ | (1) |
| 21 | | B3129-053-000 | TENSION SPRING | イトチヨ-シハ ^ネ | (1) |
| 22 | | B3132-051-000 | TENSION DISC HOLDER | イトチヨ-シサラ オサ ^エ | (1) |
| 23 | | B3126-051-000 | TENSION DISC | イトチヨ-シ サラ | (2) |
| 24 | | SS-7110570-SP | SCREW 11/64-40 L= 4.8 | マルヒラネジ 11/64-40 L=4.8 | (2) |
| 25 | | PS-0600502-KP | SPRING PIN | スプリング ^ピ ン | 1 |
| 26 | | 103-21107 | TENSION RELEASE BAR | イトユルメ オンホ ^ネ | 1 |
| 27 | | SS-7110710-SP | SCREW 11/64-40 L=7 | マルヒラネジ 11/64-40 L=7 | 2 |
| 28 | | D1105-245-E00 | THROAT PLATE | ハリイタ | 1 |
| 29 | | SS-2110915-SP | SCREW 11/64-40 L=6.8 | マルサラネジ 11/64-40 L=8.5 | 2 |
| 30 | | D1173-245-E00 | TOP COVER | ウワメンカハ ^ネ | 1 |
| 31 | | SS-2090710-SP | SCREW 9/64-40 L=7 | マルサラネジ 9/64-40 L=7 | 1 |
| 32 | #01 | B1173-245-000 | BED COVER | ヘ ^ツ ツ ^ウ ワメンカハ ^ネ | 1 |
| 33 | #01 | SS-2090710-SP | SCREW 9/64-40 L=7 | マルサラネジ 9/64-40 L=7 | 3 |
| 34 | #01 | B1174-245-000 | SET PIN | ヘ ^ツ ツ ^ウ シ ^ウ ワメンカハ ^ネ -トメ ^ピ ン | 1 |
| 35 | #01 | B1105-245-000 | THROAT PLATE | ハリイタ | 1 |
| 36 | | B1130-521-0A0 | THREAD GUIDE ASM., LOWER | イトアンナイ シタ クミ | 1 |
| 37 | | B1130-521-000 | THREAD GUIDE | イトアンナイ シタ | (1) |
| 38 | | B1131-521-000 | THREAD PRESSER PLATE | ハリイタ オサ ^エ イタ | (1) |
| 39 | | B1132-521-000 | THREAD PRESSER PLATE SPRING | ハリイタ オサ ^エ イタ ハ ^ネ | (1) |
| 40 | | SD-0380551-SL | HINGE SCREW D= 3.80 H= 5.5 | タ ^ン ネジ D=3.8 H=5.5 | (1) |
| 41 | | SS-2090710-SP | SCREW 9/64-40 L=7 | マルサラネジ 9/64-40 L=7 | 2 |
| 42 | #01 | SS-3090610-SP | SCREW 9/64-40 L=6 | マルネジ 9/64-40 L=6 | 1 |
| 43 | | SS-6111140-SP | SCREW 11/64-40 L=11 | ヒラネジ 11/64-40 L=11 | 1 |
| 44 | | NS-6110350-SP | NUT 11/64-40 | ロツカクナツト 11/64-40 | 1 |
| 45 | #01 | B3121-245-0A0 | TENSION CONTROLLER ASM. | イトチヨウシクミ | 1 |
| 46 | #01 | B3125-012-000 | THREAD TENSION STUD NUT | イトチヨ-シ ナツト | (2) |
| 47 | #01 | B3129-053-000 | TENSION SPRING | イトチヨ-シハ ^ネ | (1) |
| 48 | #01 | B3132-051-000 | TENSION DISC HOLDER | イトチヨ-シサラ オサ ^エ | (1) |
| 49 | #01 | B3126-051-000 | TENSION DISC | イトチヨ-シ サラ | (2) |
| 50 | #01 | B3114-761-000 | FRAME THREAD GUIDE B | イトアンナイ B | (1) |
| 51 | #01 | B3124-051-000 | TENSION STUD | イトチヨ-シホ ^ネ | (1) |
| 52 | #01 | B3121-245-000 | TENSION POST BASE | イトチヨウシタ ^イ イタ | (1) |
| 53 | #01 | NS-6060350-SP | NUT 3/32-56 | ロツカクナツト 3/32-56 | (1) |
| 54 | #01 | B3134-051-000 | TENSION RELEASE LEVER | イトユルメ イタ | (1) |
| 55 | #01 | SD-0470281-SP | HINGE SCREW D=4.7 H=2.8 | タ ^ン ネジ D=4.7 H=2.8 | (2) |
| 56 | #01 | B3122-053-000 | TENSION RELEASE BAR | イトユルメ オンホ ^ネ | (1) |
| 57 | #01 | B3127-051-000 | TENSION RELEASE PIN, SHORT | イトユルメ ピ ^ン | (1) |
| 58 | #01 | B3128-051-000 | THREAD TAKE-UP SPRING, A | イトトリハ ^ネ | (1) |
| 59 | #01 | B3123-051-000 | TAKE-UP SPRING STUD | イトトリ ハ ^ネ ネジ ^ク | (1) |
| 60 | #01 | B3137-051-0A0 | TAKE-UP SPRING GUIDE DISC ASM. | イトトリハ ^ネ アンナイサ ^ラ クミ | (1) |
| 61 | #01 | SS-4080610-SP | SCREW 1/8-44 L=6.4 | ナ ^ハ ネジ 1/8-44 L=6.4 | (1) |
| 62 | #01 | SS-7110710-SP | SCREW 11/64-40 L=7 | マルヒラネジ 11/64-40 L=7 | 1 |
| 63 | #01 | B1131-562-000 | FRAME THREAD GUIDE, LOWER | イトアンナイ シタ | 1 |
| 64 | #01 | SS-3090610-SP | SCREW 9/64-40 L=6 | マルネジ 9/64-40 L=6 | 1 |
| 65 | #02 | D1105-245-E0C | THROAT PLATE | ハリイタ | 1 |
| 66 | #02 | B1105-245-00C | THROAT PLATE | ハリイタ | 1 |
| 67 | #02 | B1130-051-000 | FRAME THREAD GUIDE, MIDDLE | イトアンナイ | 1 |
| 68 | #02 | SS-2090710-SP | SCREW 9/64-40 L=7 | マルサラネジ 9/64-40 L=7 | 1 |

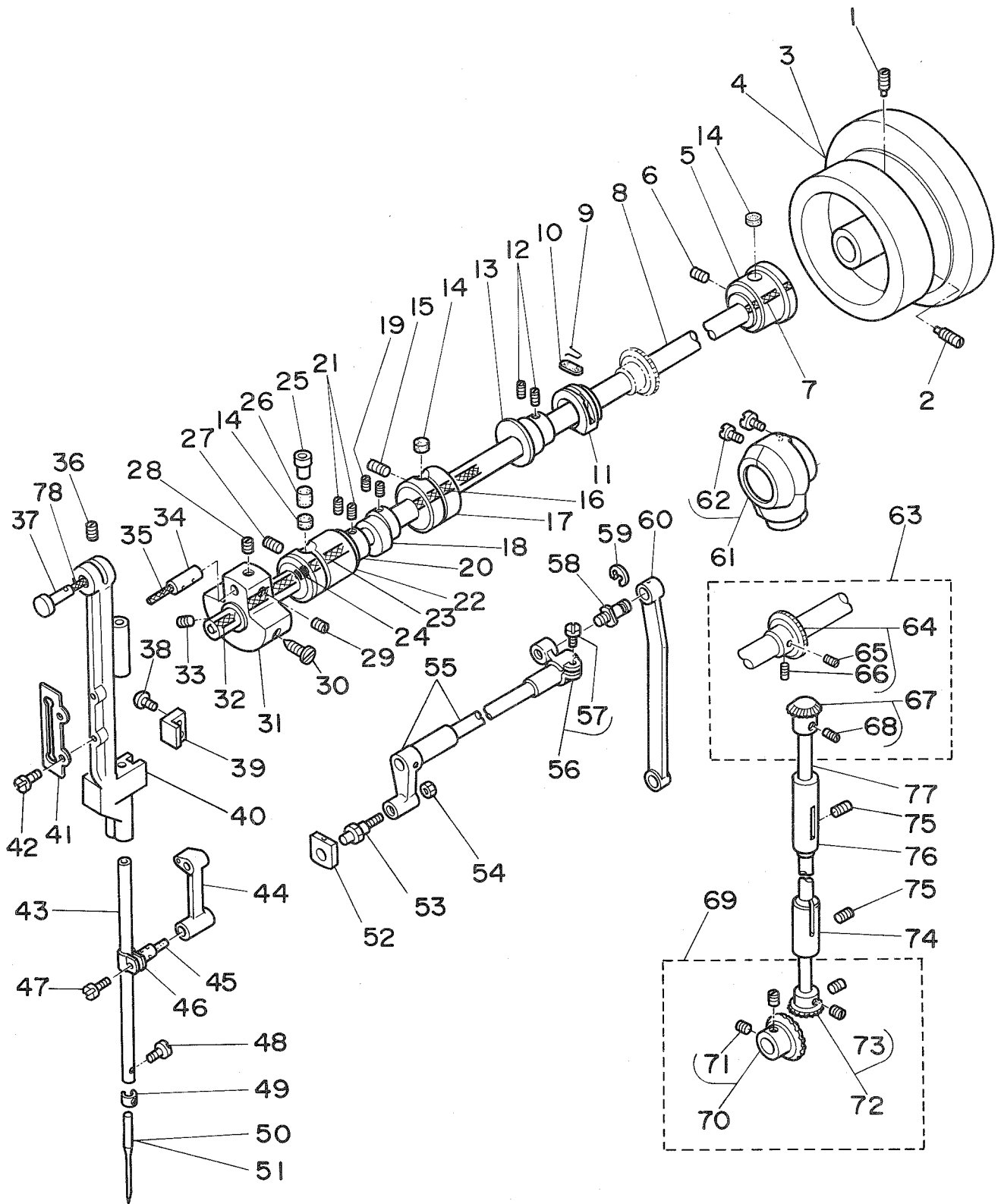
Note(注記)#01.....For DSC-245

#02.....Special order part

DSC-245用

特別注文部品

3. MAIN SHAFT & NEEDLE BAR COMPONENTS
 上軸・針棒関係



| REF.NO. | NOTE | PART NO. | DESCRIPTION | ヒンメイ | AMT. |
|---------|------|---------------|----------------------------------|-----------------------|------|
| 1 | | SS-8151550-SP | SCREW 15/64-28 L=15 | トメネジ 15/64-28 L=15 | 1 |
| 2 | | SS-8151780-SP | SCREW 15/64-28 L=17.0 | トメネジ 15/64-28 L=17 | 1 |
| 3 | | D1227-245-E00 | HAND WHEEL | ハズミクルマ | 1 |
| 4 | #01 | B1227-245-000 | HAND WHEEL | ハズミクルマ | 1 |
| 5 | | B1204-241-H00 | BUSHING, REAR | ウワジクウシロメタル | 1 |
| 6 | | SS-8150710-SP | SCREW 15/64-28 L=7 | トメネジ 15/64-28 L=7 | 1 |
| 7 | | CQ-2520000-00 | OIL WICK | エジン | 0.1 |
| 8 | | D1201-241-E00 | MAIN SHAFT | ウワジク | 1 |
| 9 | | B1213-012-000 | FELT RETAINER | フェルト オサエ | 1 |
| 10 | | B1212-012-000 | OIL FELT | フェルト | 1 |
| 11 | | B1211-226-000 | ECCENTRIC RETAINER HOUSING | フタマタサヤ | 1 |
| 12 | | SS-8150710-SP | SCREW 15/64-28 L=7 | トメネジ 15/64-28 L=7 | 2 |
| 13 | | B1211-141-H00 | FEED ECCENTRIC CAM | スライ オクリ アンジン カム | 1 |
| 14 | | B1203-051-000 | OIL FELT | ウワジク マイメタル フェルト | 3 |
| 15 | | SS-8151550-SP | SCREW 15/64-28 L=15 | トメネジ 15/64-28 L=15 | 1 |
| 16 | | CQ-2520000-00 | OIL WICK | エジン | 0.1 |
| 17 | | B1203-241-H00 | BUSHING, INTERMEDIATE | ウワジクナカメタル | 1 |
| 18 | | D1450-055-B00 | UPPER FEED DRIVING CAM | ウワオクリカム | 1 |
| 19 | | SS-8660530-TP | SCREW 1/4-40 L= 4.5 | トメネジ 1/4-40 L=4.5 | 2 |
| 20 | | CS-1271012-SH | THRUST COLLAR D=12.7 W=10 | スラストウケ D=12.7 W=10 | 1 |
| 21 | | SS-8660610-TP | SCREW 1/4-40 L=6 | トメネジ 1/4-40 L=6 | 2 |
| 22 | | B1202-241-H00 | MAIN SHAFT BUSHING, FRONT | ウワジク マイメタル | 1 |
| 23 | | CQ-2520000-00 | OIL WICK | エジン | 0.1 |
| 24 | | B1230-051-000 | LEATHER PLUG | ウワジク マイメタル エジントメセン | 1 |
| 25 | | B1156-115-000 | RUBBER PLUG | ウワジク アブラタマリ フタ | 1 |
| 26 | | B3517-009-000 | OIL FELT REAR | コープ アブラタマメ フェルト | 1 |
| 27 | | SS-8151550-SP | SCREW 15/64-28 L=15 | トメネジ 15/64-28 L=15 | 1 |
| 28 | | SS-8680540-SP | SCREW 9/32-28 L= 4.5 | トメネジ 9/32-28 L=4.5 | 1 |
| 29 | | SS-8680730-SP | SCREW 9/32-28 L=7 | トメネジ 9/32-28 L=7 | 1 |
| 30 | | SS-7681750-TP | SCREW 9/32-28 L=16.5 | マルヒラネジ 9/32-28 L=16.5 | 1 |
| 31 | | B1206-245-000 | COUNTERWEIGHT | ツリアイタル | 1 |
| 32 | | CQ-3030000-00 | OIL WICK | エジン | 0.1 |
| 33 | | SS-8681650-TP | SCREW 9/32-28 L=16 | トメネジ 9/32-28 L=16 | 1 |
| 34 | | B1210-051-000 | NEEDLE BAR CRANK PIN | ハリホー クランクピン | 1 |
| 35 | | CQ-5050000-00 | OIL WICK | エジン | 0.1 |
| 36 | | SS-8151150-SP | SCREW 15/64-28 L=10.5 | トメネジ 15/64-28 L=10.5 | 1 |
| 37 | | B1421-241-H00 | NEEDLE BAR FRAME TAPER STUD | ハリホー-オート-タインジク | 1 |
| 38 | | SS-7110910-TP | SCREW 11/64-40 L= 8.5 | マルヒラネジ 11/64-40 L=8.5 | 2 |
| 39 | | B1423-245-000 | NEEDLE BAR FRAME GUIDE | ヨウトウタ イアンナイ | 1 |
| 40 | | D1420-241-E00 | NEEDLE BAR FRAME | ハリホーウ ヨウトウタ | 1 |
| 41 | | I03-13708 | WALKING BAR GUIDE | ウワオクリホー-カイト | 1 |
| 42 | | SS-7110910-TP | SCREW 11/64-40 L= 8.5 | マルヒラネジ 11/64-40 L=8.5 | 2 |
| 43 | | D1401-245-E00 | NEEDLE BAR | ハリホーウ | 1 |
| 44 | | D1408-241-E00 | NEEDLE BAR CRANK ROD | ハリホーウ クランクロッド | 1 |
| 45 | | D1412-241-E00 | FELT | ハリホーウタキ フェルト | 1 |
| 46 | | D1411-241-E00 | NEEDLE BAR CONNECTION | ハリホーウタキ | 1 |
| 47 | | SS-7090910-SP | SCREW 9/64-40 L= 8.5 | マルヒラネジ 9/64-40 L=8.5 | 1 |
| 48 | | SS-7080510-TP | SCREW 1/8-44 L=4.5 | マルヒラネジ 1/8-44 L=4.5 | 1 |
| 49 | | B1419-245-000 | NEEDLE BAR THREAD GUIDE | ハリホーウイタケ | 1 |
| 50 | #02 | MDP-170B1800 | NEEDLE DPX17 #18 | ハリ DPX17 #18 | 1 |
| 51 | #03 | MC-3720018-00 | NEEDLE 135X17 NM 110 | ハリ135X17NM110 | 1 |
| 52 | | D1425-241-E00 | NEEDLE BAR FRAME SLIDE BLOCK | ハリホーウ ヨウトウ カクコマ | 1 |
| 53 | | D1426-241-E00 | SLIDE BLOCK STUD | ヨウトウ カクコマジク | 1 |
| 54 | | NS-6620310-SP | NUT 3/16-32 | ロツカクナツ 3/16-32 | 1 |
| 55 | | B1429-241-HA0 | NEEDLE BAR FRAME LOCK SHAFT ASM. | ハリホー-オート-ジク クミ | 1 |
| 56 | | B1431-241-HA0 | ROCK SHAFT REAR CRANK ASM. | ハリホー-オート-コープウチ クミ | 1 |
| 57 | | SS-7151210-SP | SCREW 15/64-28 L=12 | マルヒラネジ 15/64-28 L=12 | (1) |
| 58 | | B1424-158-000 | HINGE SCREW | ハリホー-オート-オクリウチ タンネジ | 2 |
| 59 | | RE-0700000-K0 | E-SHAPED SNAP RING (7MM) | エカタメワ 7 | 1 |
| 60 | | B1434-245-000 | DRIVING ROD | ハリホーウヨウトウロッド | 1 |
| 61 | | B1308-241-HA0 | GEAR CASE ASM. | ウワカサハク ルマケース クミ | 1 |
| 62 | | SS-7090920-SP | SCREW 9/64-40 L= 8.5 | マルヒラネジ 9/64-40 L=8.5 | (2) |
| 63 | | B1306-155-OB0 | GEAR & PINION ASM., UPPER | ウワカサハク ルマ クミ | 1 |
| 64 | | B1305-012-OA0 | GEAR ASM. | ウワカサハク ルマ タイ クミ | (1) |
| 65 | | SS-8660810-TP | SCREW 1/4-40 L=8 | トメネジ 1/4-40 L=8 | (1) |
| 66 | | SS-8660610-TP | SCREW 1/4-40 L=6 | トメネジ 1/4-40 L=6 | (1) |
| 67 | | B1306-155-OA0 | PINION ASM. | ウワカサハク ルマ ショー クミ | (1) |
| 68 | | SS-8660810-TP | SCREW 1/4-40 L=8 | トメネジ 1/4-40 L=8 | (2) |
| 69 | | B1307-155-OD0 | GEAR & PINION ASM. LOWER | シタカサハク ルマ クミ | 1 |
| 70 | | B1308-155-OB0 | PINION ASM. | シタカサハク ルマ ショウ クミ | (1) |
| 71 | | SS-8660610-TP | SCREW 1/4-40 L=6 | トメネジ 1/4-40 L=6 | (2) |
| 72 | | B1307-155-OA0 | GEAR ASM. LARGE | シタカサハク ルマ タイ クミ | (1) |
| 73 | | SS-8660810-TP | SCREW 1/4-40 L=8 | トメネジ 1/4-40 L=8 | (2) |
| 74 | | B1303-241-H00 | BUSHING, LOWER | タデジクシタメタル | 1 |
| 75 | | SS-8151550-SP | SCREW 15/64-28 L=15 | トメネジ 15/64-28 L=15 | 2 |
| 76 | | B1302-241-H00 | BUSHING, UPPER | タデジクウワメタル | 1 |
| 77 | | B1301-241-H00 | UPRIGHT SHAFT | タデジク | 1 |
| 78 | | CQ-2520000-00 | OIL WICK | エジン | 0.1 |

Note(注記)#01.....For DSC-245

#02.....Except JE

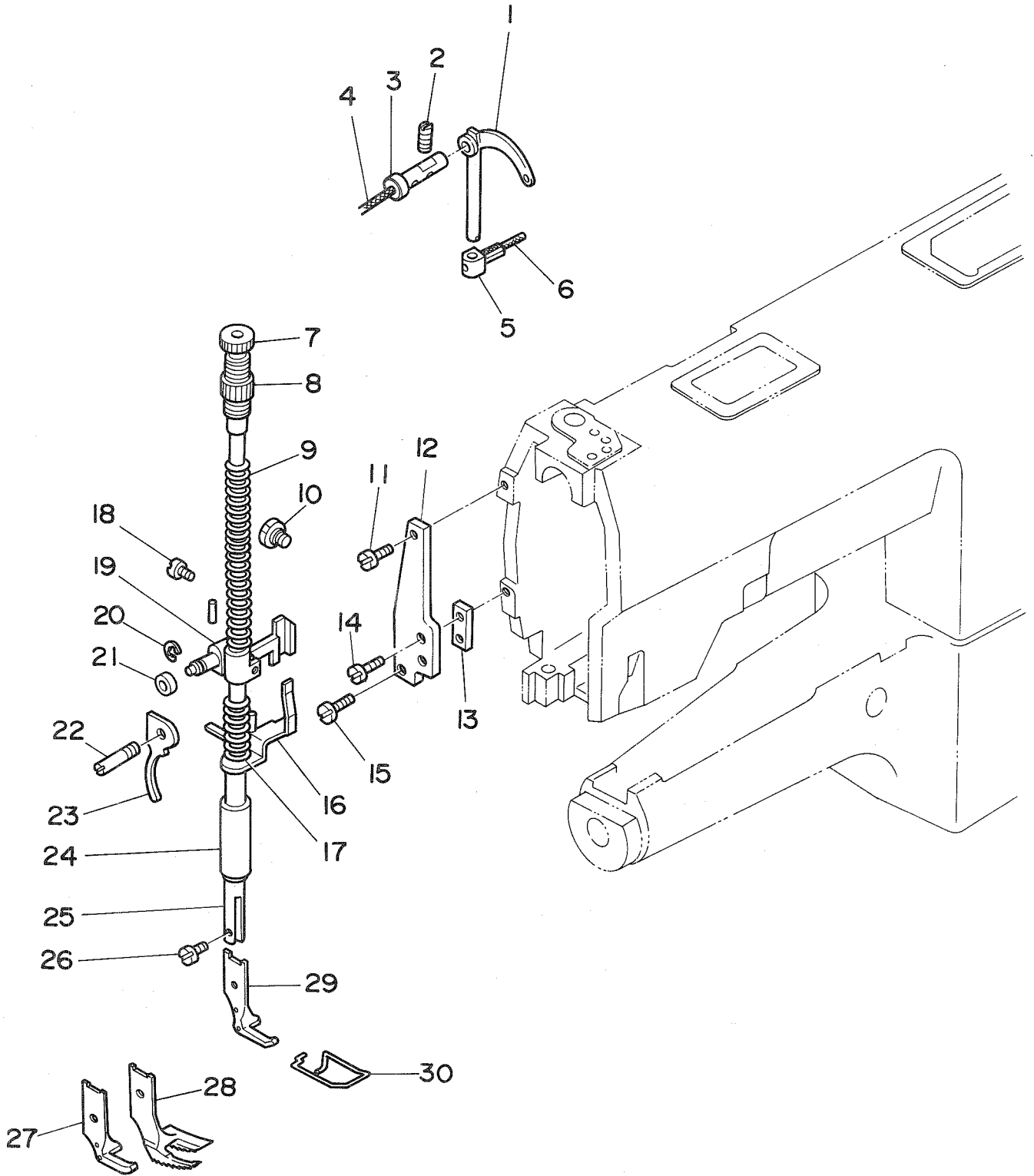
#03.....For JE

Dsc-245用

JEは除く

JE用

4. PRESSER BAR & THREAD TAKE-UP COMPONENTS
 押え棒・天秤関係

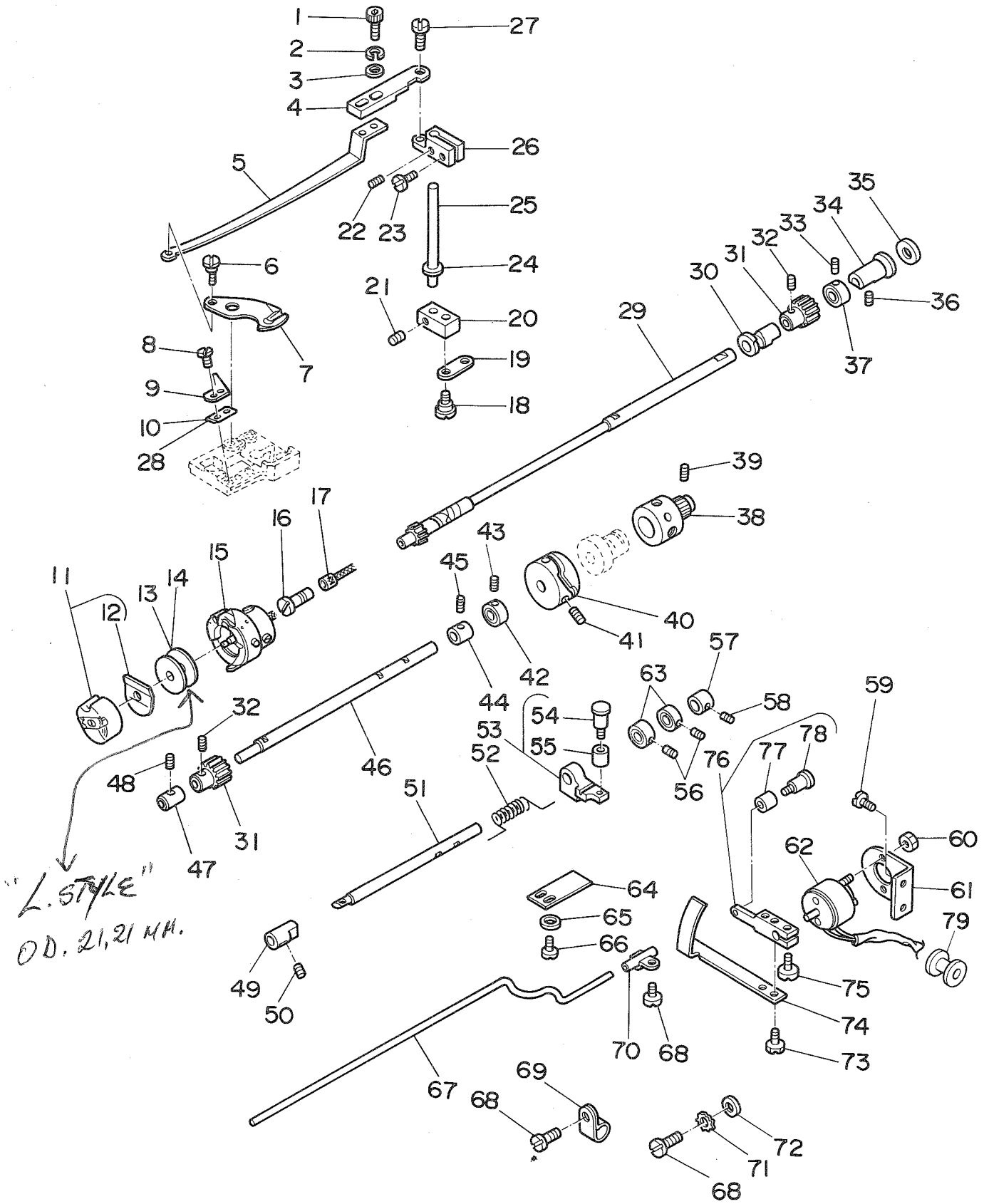


| REF.NO. | NOTE | PART NO. | DESCRIPTION | ヒンメイ | AMT. |
|---------|------|---------------|---------------------------|------------------------|------|
| 1 | | B1905-245-000 | THREAD TAKE-UP LEVER | デンピン | 1 |
| 2 | | SS-8151150-SP | SCREW 15/64-28 L=10.5 | トメネジ 15/64-28 L=10.5 | 1 |
| 3 | | B1906-051-000 | TAKE-UP LEVER PIN | デンピン ササエシク | 1 |
| 4 | | D3505-241-E00 | OIL WICK | デンピン ササエシク ユシヨ A | 1 |
| 5 | | D1907-241-E00 | TAKE-UP LEVER THRUST PIN | デンピン スライトシク | 1 |
| 6 | | CQ-2020000-00 | OIL WICK | ユシヨ | 0.1 |
| 7 | | B1509-141-H00 | PRESSER SPRING REGULATOR | オサエチヨ-セツネジ | 1 |
| 8 | | B1511-555-000 | NUT 1/2-28 | オサエチヨ-セツネジ ナツト | 1 |
| 9 | | B1510-141-H00 | PRESSER SPRING | オサエチヨ-セツハネ | 1 |
| 10 | | SD-0800481-SP | HINGE SCREW D= 8 H= 4.9 | タツネジ D=8 H=4.9 | 1 |
| 11 | | SS-7150740-SP | SCREW 15/64-28 L=7 | マルヒラネジ 15/64-28 L=7 | 1 |
| 12 | | D1464-241-E00 | PRESSER BAR BRACKET | オサエアケテヨ カイトイ トタ | 1 |
| 13 | | D1463-241-E00 | PRESSER BAR BRACKET GUIDE | オサエアケテヨ カイト | 1 |
| 14 | | SS-7621040-SP | SCREW 3/16-32 L= 9.5 | マルヒラネジ 3/16-32 L=9.5 | 2 |
| 15 | | SS-7621040-SP | SCREW 3/16-32 L= 9.5 | マルヒラネジ 3/16-32 L=9.5 | 1 |
| 16 | | B1460-246-0A0 | THREAD RELEASE GUIDE ASM. | イト ユルメ ウケイタ (ケツコウ) | 1 |
| 17 | | B1462-053-000 | THREAD RELEASE SPRING | イトユルメ ウケイタ ハネ | 1 |
| 18 | | SS-7111310-SP | SCREW 11/64-40 L=12.8 | マルヒラネジ 11/64-40 L=12.8 | 1 |
| 19 | | D1460-241-EA0 | PRESSER LIFTER LEVER ASM. | オサエアケテヨ タイ ケツコウ | 1 |
| 20 | | RE-0700000-K0 | E-SHAPED SNAP RING (7MM) | Eカトメワ 7 | 1 |
| 21 | | D1462-241-E00 | CONNECTING PIN ROLLER | オサエアケテヨ タイ シク コロ | 1 |
| 22 | | B1515-051-000 | HAND LIFTER PIN | オサエアケ シク | 1 |
| 23 | | B1512-051-000 | HAND LIFTER | オサエアケ | 1 |
| 24 | | B1510-155-000 | PRESSER BAR LOWER BUSHING | オサエホー シタメタル | 1 |
| 25 | | B1501-241-H00 | PRESSER BAR | オサエホー | 1 |
| 26 | | SS-6090910-TP | SCREW 9/64-40 L=9 | ヒラネジ 9/64-40 L=9 | 1 |
| 27 | #01 | B1524-245-00A | PRESSER FOOT | オサエアシ | 1 |
| 28 | #01 | B1524-245-00B | PRESSER FOOT | オサエアシ | 1 |
| 29 | | B1524-245-000 | PRESSER FOOT | オサエアシ | 1 |
| 30 | | B1471-245-000 | FINGER GUARD | ハリホウアンセンカハ | 1 |

Note(注記)#01.....Special order part

特別注文部品

5. THREAD TRIMMER COMPONENTS
糸切り装置関係



| REF.NO. | NOTE | PART NO. | DESCRIPTION | ヒ | ン | メ | イ | AMT. |
|---------|------|-----------------|--------------------------------|---------------------|-------------|--------|---|------|
| 1 | | SS-7091410-SP | SCREW 9/64-40 L=13.5 | マルヒラネジ | 9/64-40 | L=13.5 | | 2 |
| 2 | | WS-0411002-KN | SPRING WASHER | ハネサカネ | 4.1X6.9X1.0 | | | 2 |
| 3 | | WP-0371026-SD | WASHER 3.7X7X1 | ヒラサカネ | 3.7X7X1 | | | 2 |
| 4 | | D2420-245-E00 | KNIFE DRIVING PLATE, B | メスクトウイタB | | | | 1 |
| 5 | | D2431-245-E00 | KNIFE DRIVING PLATE, A | メスクトウイタA | | | | 1 |
| 6 | | D2433-245-E00 | HINGE SCREW | メスクトウタネジ | | | | 1 |
| 7 | | D2401-245-E00 | MOVING KNIFE | トウメス | | | | 1 |
| 8 | | SS-7060310-SP | SCREW 3/32-56 L=3 | マルヒラネジ | 3/32-56 | L=3 | | 2 |
| 9 | | D2402-245-E00 | COUNTER KNIFE | コチメス | | | | 1 |
| 10 | #01 | D2422-245-E0A | KNIFE PRESSURE ADJUSTING PLATE | メスアツチヨウセツイタ | | | | 1 |
| 11 | | B1837-245-0A0 | BOBBIN CASE ASM. | ホヒンケース | | | | 1 |
| 12 | | B1838-245-000 | SPRING | クウテンホウシハネ | | | | (1) |
| 13 | | B9117-552-A00 | BOBBIN | ホヒン | | | | 1 |
| 14 | #02 | B9117-012-000 | BOBBIN | ホヒン | | | | 1 |
| 15 | | B1830-245-0A0 | HOOK ASM. | カマ | | | | 1 |
| 16 | | B1808-552-000 | OIL SEAL SCREW | ユジン トメネジ | | | | 1 |
| 17 | | B1809-245-0A0 | OIL WICK ASM. | シタジクマイトメネジユジン(ケツコウ) | | | | 1 |
| 18 | | D2441-141-E00 | HINGE SCREW | メスクトウジク | レンケツリンカタネジ | | | 2 |
| 19 | | D2436-141-E00 | CONNECTING LINK | メスクトウジク | レンケツ リンク | | | 1 |
| 20 | | D2412-245-E00 | KNIFE DRIVING SHAFT ARM, A | メスクトウジクウチA | | | | 1 |
| 21 | | SS-7110540-SP | SCREW 11/64-40 L=5 | マルヒラネジ | 11/64-40 | L=5 | | 2 |
| 22 | | SS-8090410-SP | SCREW 9/64-40 L=3.5 | トメネジ | 9/64-40 | L=3.5 | | 1 |
| 23 | | SS-7111410-SP | SCREW 11/64-40 L=14 | マルヒラネジ | 11/64-40 | L=14 | | 1 |
| 24 | #01 | B1853-512-00C-A | WASHER C | カマジクサカネ C | | | | 1 |
| 25 | | D2413-245-E00 | DRIVING SHAFT, B | イトキリクトウジクB | | | | 1 |
| 26 | | D2419-245-E00 | KNIFE DRIVING LINK, B | メスクトウウチB | | | | 1 |
| 27 | | SD-0640321-SP | HINGE SCREW D=6.35 H=3.2 | タネネジ | D=6.35 | H=3.2 | | 1 |
| 28 | | D2422-245-E00 | KNIFE PRESSURE ADJUSTING PLATE | メスアツチヨウセツイタ | | | | 1 |
| 29 | | B1801-245-000 | HOOK DRIVING SHAFT | シモジク | | | | 1 |
| 30 | | B1802-245-000 | BUSHING, FRONT | シモジクマメタル | | | | 1 |
| 31 | | D2405-245-E00 | CAM SHAFT GEAR | カムジクキヤ | | | | 2 |
| 32 | | SS-8660530-TP | SCREW 1/4-40 L=4.5 | トメネジ | 1/4-40 | L=4.5 | | 4 |
| 33 | | D2434-245-E00 | SCREW | スラストウチメネジ | | | | 2 |
| 34 | | B1803-245-000 | BUSHING, REAR | シモジクカウシロメタル | | | | 1 |
| 35 | #01 | B1839-245-00B | THRUST WASHER | シモジクスラストイタ | | | | 1 |
| 36 | | SS-8151550-SP | SCREW 15/64-28 L=15 | トメネジ | 15/64-28 | L=15 | | 1 |
| 37 | | D2432-245-E00 | THRUST COLLER | スラストウチ | | | | 1 |
| 38 | | D2408-245-E00 | BUSHING, REAR | カムジクカウシロメタル | | | | 1 |
| 39 | | SS-8151230-SP | SCREW 15/64-28 L=12 | トメネジ | 15/64-28 | L=12 | | 1 |
| 40 | | D2403-245-E00 | THREAD TRIMMER CAM | イトキリカム | | | | 1 |
| 41 | | SS-8660612-TP | SCREW 1/4-40 L=6.0 | トメネジ | 1/4-40 | L=6 | | 2 |
| 42 | | D2432-245-E00 | THRUST COLLER | スラストウチ | | | | 1 |
| 43 | | D2434-245-E00 | SCREW | スラストウチメネジ | | | | 2 |
| 44 | | D2407-245-E00 | BUSHING, INTERMEDIATE | カムジクナカメタル | | | | 1 |
| 45 | | SS-8151230-SP | SCREW 15/64-28 L=12 | トメネジ | 15/64-28 | L=12 | | 1 |
| 46 | | D2404-245-E00 | CAM SHAFT | カムジク | | | | 1 |
| 47 | | D2406-245-E00 | BUSHING, FRONT | カムジクマメタル | | | | 1 |
| 48 | | SS-8151230-SP | SCREW 15/64-28 L=12 | トメネジ | 15/64-28 | L=12 | | 1 |
| 49 | | D2410-245-E00 | BUSHING, FRONT | イトキリクトウジクマメタル | | | | 1 |
| 50 | | SS-8151230-SP | SCREW 15/64-28 L=12 | トメネジ | 15/64-28 | L=12 | | 1 |
| 51 | | D2409-245-E00 | DRIVING SHAFT, A | イトキリクトウジクA | | | | 1 |
| 52 | | D2416-245-E00 | SPRING | モトシハネ | | | | 1 |
| 53 | | D2417-245-EA0 | CAM ROLLER ARM ASM | カムコロウチクミ | | | | 2 |
| 54 | | D2423-245-E00 | CAM ROLLER ARM | カムコロジク | | | | (1) |
| 55 | | D2413-141-E00 | ROLLER | ソリノイトウチコロ | | | | (1) |
| 56 | | D2434-245-E00 | SCREW | スラストウチメネジ | | | | 4 |
| 57 | | D2411-245-E00 | BUSHING, REAR | イトキリクトウジクカウシロメタル | | | | 1 |
| 58 | | SS-8151230-SP | SCREW 15/64-28 L=12 | トメネジ | 15/64-28 | L=12 | | 1 |
| 59 | | SS-7110910-SP | SCREW | マルヒラネジ | 11/64-40 | L=8.5 | | 2 |
| 60 | | NM-6040000-SN | NUT M4 | ロツカクナツト | M4X0.7 | 1シュ | | 2 |
| 61 | | D2418-245-E00 | SOLENOID BASE | イトキリソリノイトコチイハン | | | | 1 |
| 62 | | D2414-245-E00 | SOLENOID | イトキリソリノイト | | | | 1 |
| 63 | | D2432-245-E00 | THRUST COLLER | スラストウチ | | | | 1 |
| 64 | | D2421-245-E00 | CAM ROLLER ARM HOLDER | カムコロウチオサエ | | | | 1 |
| 65 | | WP-0371026-SD | WASHER 3.7X7X1 | ヒラサカネ | 3.7X7X1 | | | 2 |
| 66 | | SS-6090810-SP | SCREW 9/64-40 L=7.5 | ヒラネジ | 9/64-40 | L=7.5 | | 2 |
| 67 | | D2427-245-E00 | PICKER DRIVING BAR | ピツカークトホウ | | | | 1 |
| 68 | | SS-7110710-SP | SCREW 11/64-40 L=7 | マルヒラネジ | 11/64-40 | L=7 | | 1 |
| 69 | | D2120-555-C00 | CORD PRESSER (120V) | ナイロン クランプ | | | | 1 |
| 70 | | D2430-245-EA0 | PICKER DRIVING BAR HOLDER ASM. | ピツカーファンナイサエ(クミ) | | | | 1 |
| 71 | | WT-0530002-KS | TOOTED WASHER | ハツキサカネ | A5.3 | | | 1 |
| 72 | | WP-0501016-SD | WASHER 5X10.5X1 | ヒラサカネ | 5X10.5X1 | | | 1 |
| 73 | | SS-9091010-SP | SCREW 9/64-40 L=10 | ロツカクホルト | 9/64-40 | L=10 | | 2 |
| 74 | | D2428-245-E00 | PICKER DRIVING PLATE | ピツカークトウイタ | | | | 1 |
| 75 | | SS-7110910-SP | SCREW | マルヒラネジ | 11/64-40 | L=8.5 | | 1 |
| 76 | | D2415-245-EA0 | SOLENOID ARM ASM. | イトキリソリノイトウチクミ | | | | 1 |
| 77 | | D2413-141-E00 | ROLLER | ソリノイトウチコロ | | | | (1) |
| 78 | | D2423-245-E00 | CAM ROLLER ARM | カムコロジク | | | | (1) |
| 79 | | D2414-141-E00 | LORD BUSHING | コムム プッシュ | | | | 1 |

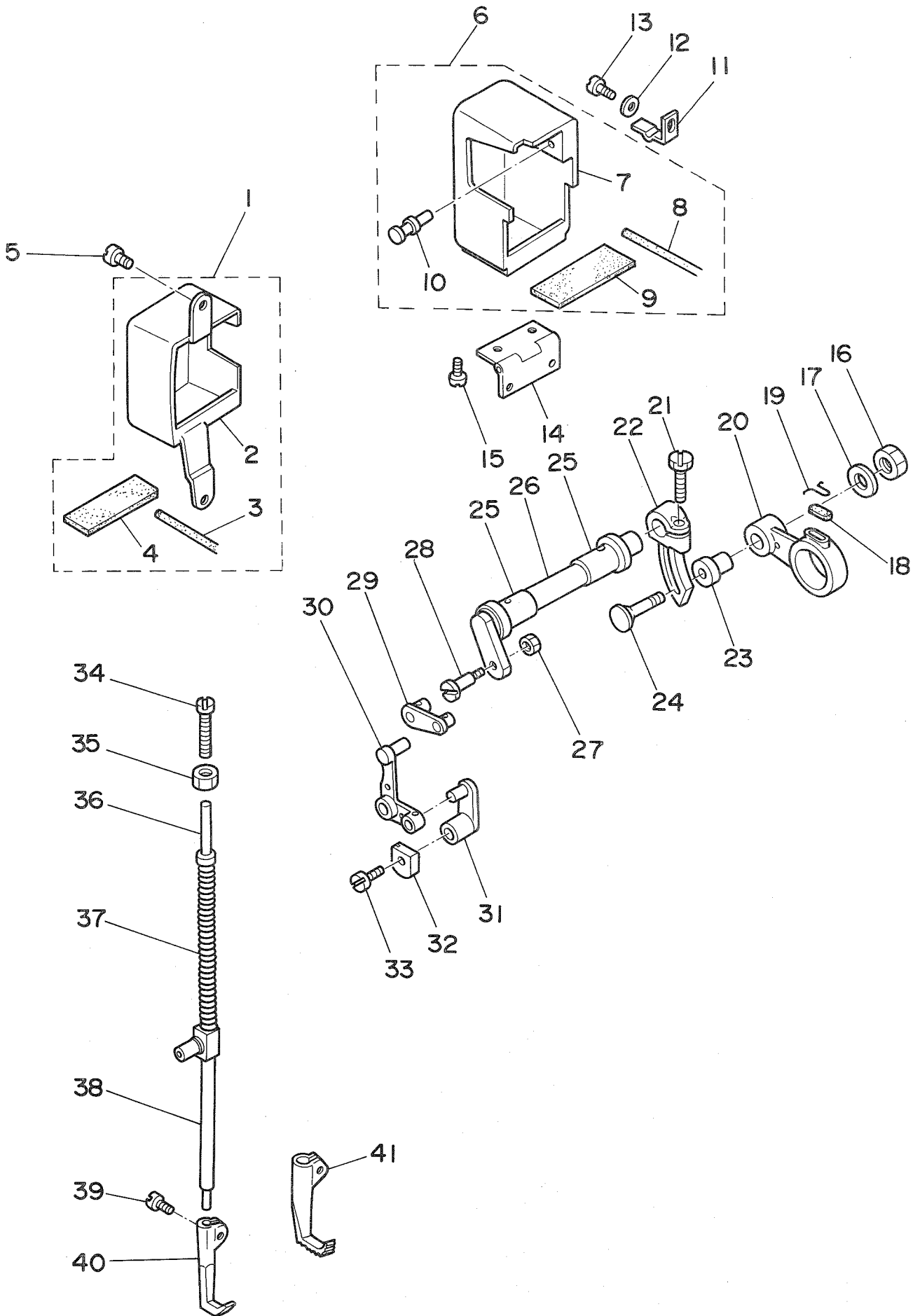
Note(注記)#01.....Selective part

#02.....For DSC-245

選択部品

DSC-245用

6. WALKING FOOT COMPONENTS
 上送り関係

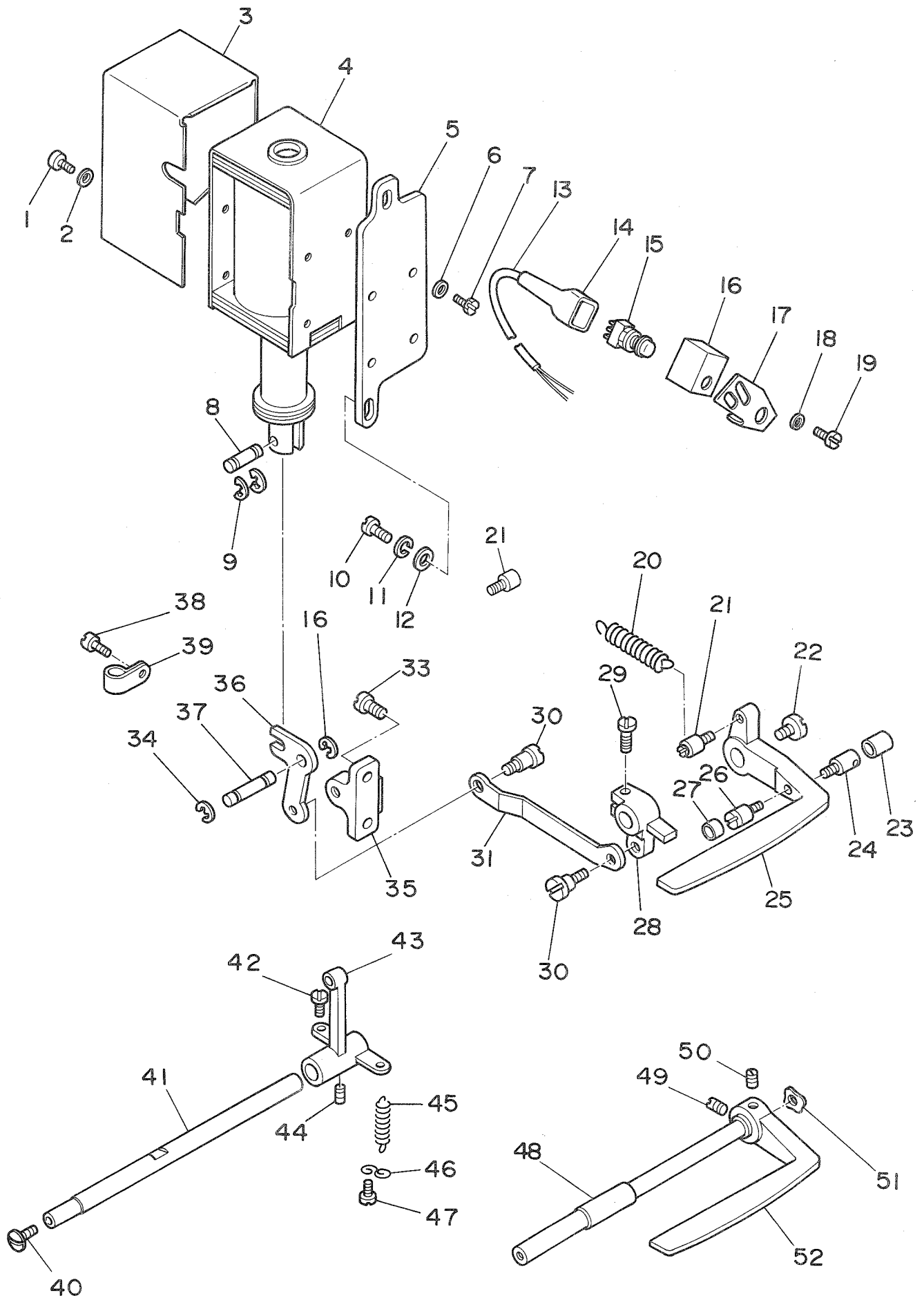


| REF.NO. | NOTE | PART NO. | DESCRIPTION | ヒ ン メ イ | AMT. |
|---------|------|---------------|-----------------------------|------------------------|-------|
| 1 | | D1480-241-EAO | UPPER FEED FRONT COVER ASM. | ウワオクリ カハ- マエ クミ | 1 |
| 2 | | D1480-241-E00 | UPPER FEED FRONT COVER | ウワオクリ カハ- (マエ) | (1) |
| 3 | | CQ-3030000-00 | OIL WICK | エンジン | (0.2) |
| 4 | | D1481-241-E00 | FELT | ウワオクリ カハ- フィルト (マエ) | (1) |
| 5 | | SS-7111120-SP | SCREW 11/64-40 L=10.5 | マルヒラネジ 11/64-40 L=10.5 | 2 |
| 6 | | D1482-241-EAO | UPPER FEED REAR COVER ASM. | ウワオクリ カハ- ウシロ クミ | 1 |
| 7 | | D1482-241-E00 | UPPER FEED REAR COVER | ウワオクリ カハ- (ウシロ) | (1) |
| 8 | | CQ-3030000-00 | OIL WICK | エンジン | (0.2) |
| 9 | | D1483-241-E00 | FELT | ウワオクリ カハ- フィルト (ウシロ) | (1) |
| 10 | | D1484-241-E00 | PIN | ウワオクリ カハ- イタ ハネ ヒオン | (1) |
| 11 | | D1485-241-E00 | UPPER FEED COVER SPRING | ウワオクリ カハ- イタ ハネ | 1 |
| 12 | | WP-0450000-SD | WASHER 4.5X8X0.5 | ヒラサガネ 4.5X8X0.5 | 1 |
| 13 | | SS-7110710-SP | SCREW 11/64-40 L=7 | マルヒラネジ 11/64-40 L=7 | 1 |
| 14 | | D1486-241-E00 | UPPER FEED COVER HINGE | ウワオクリカハ- チヨウツガイ | 1 |
| 15 | | SS-7110710-SP | SCREW 11/64-40 L=7 | マルヒラネジ 11/64-40 L=7 | 4 |
| 16 | | NS-6620310-SP | NUT 3/16-32 | ロツカクナツト 3/16-32 | 1 |
| 17 | | D1457-055-B00 | WASHER | レンケツシク タンネジ サガネ | 1 |
| 18 | | B1702-012-000 | OIL FELT | フェルト | 1 |
| 19 | | B1213-012-000 | FELT RETAINER | フェルト オサエ | 1 |
| 20 | | D1453-241-E00 | UPPER FEED DRIVING ROD | ウワオクリ ロツ | 1 |
| 21 | | SS-9161610-SP | SCREW 1/4-24 L=16 | ロツカクホルト 1/4-24 L=16 | 1 |
| 22 | | B1454-245-000 | UPPER FEED SPRING ROD | ウワオクリウチ | 1 |
| 23 | | D1455-055-B00 | CONNECTING STUD | ウワオクリ ロツ レンケツシク | 1 |
| 24 | | B1456-141-H00 | HINGE SCREW | ウワ オクリ ロツレンケツシク タンネジ | 1 |
| 25 | | 103-13906 | BUSHING | ウワオクリシク メタル | 2 |
| 26 | | 103-14003 | UPPER FEED DRIVING SHAFT | ウワオクリシク | 1 |
| 27 | | NS-6660430-SP | NUT 1/4-40 | ロツカクナツト 1/4-40 | 1 |
| 28 | | 103-14201 | SCREW STUD | ウワオクリ レンケツタンネジ | 1 |
| 29 | | D1458-241-E00 | CONNECTING LINK | ウワオクリ レンケツ リンク | 1 |
| 30 | | D1459-241-E00 | L SHAPED LINK | Lカクタ リンク | 1 |
| 31 | | 103-14508 | WALKING BAR DRIVING LINK | ウワオクリ ヨート-リンク | 1 |
| 32 | | B1659-484-000 | SLIDE BLOCK | フク オクリ カクゴマ | 1 |
| 33 | | SS-7110510-SP | SCREW 11/64-40 L=5 | マルヒラネジ 11/64-40 L=5 | 1 |
| 34 | | SS-6151780-SP | SCREW 15/64-28 L=17.0 | ヒラネジ 15/64-28 L=17 | 1 |
| 35 | | NS-6150310-SP | NUT 15/64-28 | ロツカクナツト 15/64-28 | 1 |
| 36 | | B1467-053-0A0 | WALKING BAR ASM. | ウワオクリカハ- シジホ- クミ | 1 |
| 37 | | B1468-053-000 | WALKING BAR SPRING | ウワオクリカハ- オサエハネ | 1 |
| 38 | | D1466-241-E00 | WALKING BAR | ウワオクリカハ | 1 |
| 39 | | SS-6110710-TP | SCREW 11/64-40 L=6.5 | ヒラネジ 11/64-40 L=6.5 | 1 |
| 40 | | B1470-245-000 | WALKING FOOT | ウワオクリアシ | 1 |
| 41 | #01 | B1470-245-00B | WALKING FOOT | ウワオクリアシ | 1 |

Note(注記)#01....Special order part

特別注文部品

7. AUTOMATIC REVERSE FEED COMPONENTS
逆送り関係



| REF.NO. | NOTE | PART NO. | DESCRIPTION | ヒンメイ | AMT. |
|---------|------|-----------------|----------------------------------|------------------------|------|
| 1 | | SS-7110710-SP | SCREW 11/64-40 L=7 | マルヒラネジ 11/64-40 L=7 | 4 |
| 2 | | WP-0501016-SD | WASHER 5X10.5X1 | ヒラサカネ 5X10.5X1 | 4 |
| 3 | | 101-19303 | SOLENOID COVER | マクネットカバー | 1 |
| 4 | | 101-19006 | REVERSE FEED SOLENOID, AC31V | キヤクオクリマクネット 31V | 1 |
| 5 | | 101-19204 | SOLENOID INSTALLING PLATE | マクネットトリツケタイ | 1 |
| 6 | | WP-0501016-SD | WASHER 5X10.5X1 | ヒラサカネ 5X10.5X1 | 4 |
| 7 | | SS-9111010-SP | SCREW 11/64-40 L=9.5 | ロツカクホルト 11/64-40 L=9.5 | 4 |
| 8 | | D2464-555-B00 | LINK DRIVING MAGNET PIN | マクネット リンクピン | 1 |
| 9 | | RE-0400000-K0 | E-RING | Eカトメワ 4 | 2 |
| 10 | | SS-7151210-SP | SCREW 15/64-28 L=12 | マルヒラネジ 15/64-28 L=12 | 2 |
| 11 | | WS-0631510-KP | SPRING WASHER | ハネサカネ | 2 |
| 12 | | WP-0621016-SD | WASHER 6.2X13X1 | ヒラサカネ 6.2X13X1 | 2 |
| 13 | #01 | HW-5001400-00 | 2-C CABLE | キヤブタイヤコト 0.18X12X2 | 1.8 |
| 14 | | MAT-81126T00 | 2-POLE PLUG COVER | 2P プラクカバー | 1 |
| 15 | | D1680-141-E00 | REVERSE FEED SWITCH | キヤクオクリ スイッチ | 1 |
| 16 | | RE-0600000-K0 | E-RING | Eカトメワ 6 | 1 |
| 17 | | D1681-241-E00 | SWITCH INSTALLING BASE | スイッチ トリツケタイ | 1 |
| 18 | | WP-0501016-SD | WASHER 5X10.5X1 | ヒラサカネ 5X10.5X1 | 2 |
| 19 | | SS-7110710-SP | SCREW 11/64-40 L=7 | マルヒラネジ 11/64-40 L=7 | 2 |
| 20 | | D1687-141-E00 | PIN | フタマタリンク シック | 1 |
| 21 | | 101-20004 | SPRING SUSPENSION | キヤクオクリレハ ハネカケ | 2 |
| 22 | | SS-7620750-SP | SCREW 3/16-32 L= 6.5 | マルヒラネジ 3/16-32 L=6.5 | 1 |
| 23 | | BP-3000000-00 | VINYL TUBE, WHITE D=3 | ビニールパイプ | 0.1 |
| 24 | | B2733-761-000 | PIN | ピン | 1 |
| 25 | #02 | D1624-241-E00 | REVERSE FEED CONTROL LEVER | キヤクオクリ レハ | 1 |
| 26 | | B1114-280-000 | PIN | ピン | 1 |
| 27 | | 101-19907 | CUSHION | キヤクオクリレハ ヨムワ | 1 |
| 28 | | 101-19709 | REVERSE FEED CONNECTING ARM | キヤクオクリレンケツウヂ | 1 |
| 29 | | SS-7121410-SP | SCREW 3/16-28 L=14 | マルヒラネジ 3/16-28 L=14 | 1 |
| 30 | | SD-0720331-SP | HINGE SCREW D= 7.24 H= 3.3 | タンネジ D=7.24 H=3.3 | 1 |
| 31 | | D1686-241-E00 | REVERSE FEED ROD | キヤク オクリ ロット | 1 |
| 32 | | SD-0720331-SP | HINGE SCREW D= 7.24 H= 3.3 | タンネジ D=7.24 H=3.3 | 1 |
| 33 | | SS-7151210-SP | SCREW 15/64-28 L=12 | マルヒラネジ 15/64-28 L=12 | 2 |
| 34 | | RE-0600000-K0 | E-RING | Eカトメワ 6 | 1 |
| 35 | | D1684-141-E00-A | LINK INSTALLING BASE | キヤクオクリフタマタリンクトリツケタイ | 1 |
| 36 | | 101-19402 | LINK | キヤクオクリ フタマタリンク | 1 |
| 37 | | D1687-141-E00 | PIN | フタマタリンク シック | 1 |
| 38 | | SS-7110710-SP | SCREW 11/64-40 L=7 | マルヒラネジ 11/64-40 L=7 | 1 |
| 39 | #03 | D2120-555-C00 | CORD PRESSER (120V) | ナイロン クランプ | 1 |
| 40 | | SS-7620750-SP | SCREW 3/16-32 L= 6.5 | マルヒラネジ 3/16-32 L=6.5 | 1 |
| 41 | #02 | D1621-241-E00 | FEED CONTROL LEVER SHAFT | オクリ チヨウセツ レハ-シック | 1 |
| 42 | | SS-6121210-SP | SCREW 3/16-28 L=12 | ヒラネジ 3/16-28 L=9 | 1 |
| 43 | | B1627-241-H00 | CONTROL LEVER CRANK | オクリチヨウセツウヂ | 1 |
| 44 | | SS-8150710-SP | SCREW 15/64-28 L=7 | トメネジ 15/64-28 L=7 | 1 |
| 45 | | B1646-241-H00 | TENSION SPRING | ヒツパリハネ | 1 |
| 46 | | B1648-122-000 | SUSPENSION HOOK (B) | ヒツパリ ハネカケ B | 1 |
| 47 | | SS-7091110-SP | SCREW 9/64-40 L=10.5 | マルヒラネジ 9/64-40 L=10.5 | 1 |
| 48 | #04 | B1621-241-H00 | REVERSE FEED CONTROL LEVER SHAFT | オクリチヨウセツレハ-シック | 1 |
| 49 | #04 | SS-8660810-TP | SCREW 1/4-40 L=8 | トメネジ 1/4-40 L=8 | 1 |
| 50 | #04 | SS-8661040-TP | SCREW 1/4-40 L=10 | トメネジ 1/4-40 L=10 | 1 |
| 51 | #04 | WZ-1052010-KP | WAVED WASHER | ナミカタサカネ10.5X14.5X0.3 | 1 |
| 52 | #04 | B1624-586-000 | REVERSE FEED CONTROL LEVER | オクリレハ | 1 |

Note(注記)#01.....For DSC-245-4-1B

#02.....For DSC-245-4-1B,5-2B,6-2B(Except JE)

#03.....For DSC-245-4-1,5-2,6-2

#04.....For DSC-245-4-1,5-2,6-2

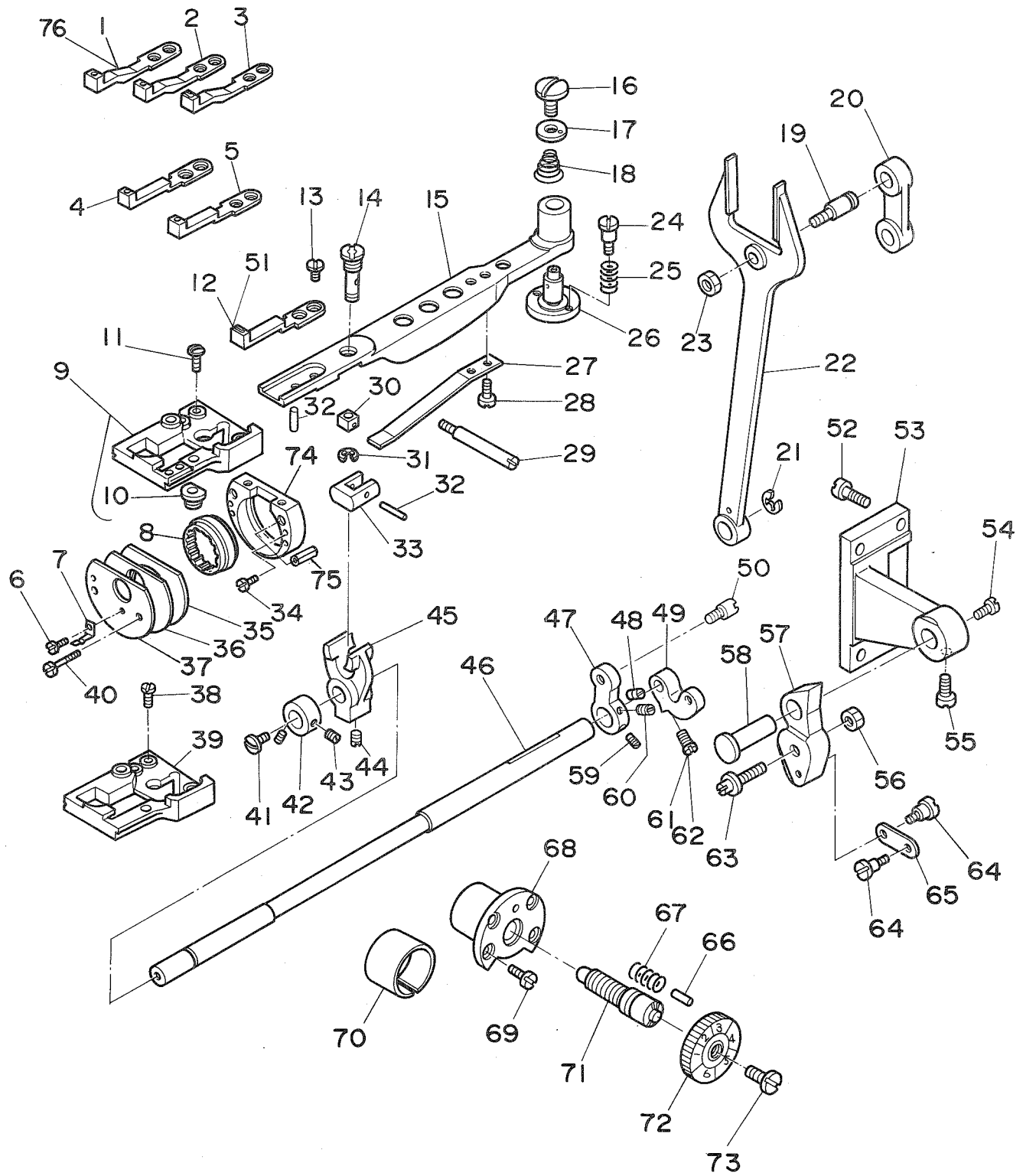
DSC-245-4-1B用

DSC-245-4-1B,5-2B,6-2B用(JEは除く)

DSC-245-4-1,5-2,6-2用

DSC-245-4-1,5-2,6-2用

8. FEED MECHANISM COMPONENTS
送り関係



| REF.NO. | NOTE | PART NO. | DESCRIPTION | ヒ | ン | メ | イ | AMT. |
|---------|------|---------------|--------------------------------|------|---------|-------|----|------|
| 1 | #01 | B1613-245-00A | FEED DOG (FOR CLOTH) | オクリハ | (ヌ) | ヨウ) | | 1 |
| 2 | #02 | B1613-245-00B | FEED DOG (FOR THIN NEEDLE) | オクリハ | (ホソ) | ハリヨウ) | | 1 |
| 3 | #03 | B1613-245-000 | FEED DOG | オクリハ | | | | 1 |
| 4 | #04 | D1613-245-E0A | FEED DOG (FOR CLOTH) | オクリ | (ヌ) | ヨウ) | | 1 |
| 5 | #05 | D1613-245-E0B | FEED DOG (FOR THIN NEEDLE) | オクリ | (ホソ) | ハリヨウ) | | 1 |
| 6 | | SS-6060210-SP | SCREW 3/32-56 L= 1.9 | ヒラネジ | 3/32-56 | L=1.9 | | 1 |
| 7 | | B1172-245-000 | HOOK COVER HOLDER | カマカハ | - | トメ | | 1 |
| 8 | | B1647-245-000 | FEED DRIVING CAM | ジ | ヨウケ | カム | | 1 |
| 9 | | D1630-245-EA0 | THROAT PLATE BASE ASM. | ハリイタ | イクミ | | | 1 |
| 10 | | B1631-245-000 | PIN BUSHING | ジ | ヨウケ | オクリ | ヒ | (1) |
| 11 | | B1649-245-000 | SCREW | ハリイタ | イト | メネジ | | 2 |
| 12 | #06 | D1613-245-E00 | FEED | オクリ | | | | 1 |
| 13 | | B1652-245-000 | SCREW | オクリ | イト | メネジ | | 2 |
| 14 | | B1645-245-000 | FEED BAR SLIDE SCREW STUD | オクリ | タ | イ | コ | 1 |
| 15 | | D1606-245-E00 | FEED BAR | オクリ | タ | イ | | 1 |
| 16 | | B1653-245-000 | SCREW | オクリ | タ | イ | ジ | 1 |
| 17 | | B1640-245-000 | BED COVER WASHER | オクリ | タ | イ | ジ | 1 |
| 18 | | B1175-245-000 | SPRING | ハ | ツ | ツ | ヨウ | 1 |
| 19 | | B1617-241-H00 | HINGE SCREW, A | フ | タ | タ | リ | 1 |
| 20 | | B1619-241-H00 | FEED CONNECTING LINK | フ | タ | タ | リ | 1 |
| 21 | | RE-0700000-K0 | E-SHAPED SNAP RING (7MM) | E | カ | タ | メ | 1 |
| 22 | | B1614-245-000 | PITMAN | フ | タ | タ | ロ | 1 |
| 23 | | NS-6680320-SP | NUT 9/32-28 | ロ | ウ | カ | ク | 1 |
| 24 | | B1641-245-000 | HINGE SCREW | オクリ | タ | イ | ジ | 2 |
| 25 | | B1642-245-000 | SPRING | オクリ | タ | イ | ジ | 2 |
| 26 | | B1639-245-000 | FEED BAR SHAFT | オクリ | タ | イ | ジ | 1 |
| 27 | | B1633-245-000 | SPRING | オクリ | タ | イ | ハ | 1 |
| 28 | | SS-7080520-SP | SCREW 1/8-44 L=4.9 | マ | ル | ヒ | ラ | 2 |
| 29 | | B1638-245-000 | SCREW STUD | ハ | ネ | チ | サ | 1 |
| 30 | | B1644-245-000 | FEED BAR SLIDE BLOCK, B | オクリ | タ | イ | コ | 1 |
| 31 | | RE-0300000-K0 | E-RING | E | カ | タ | メ | 1 |
| 32 | #08 | B1632-245-00C | PIN | ジ | ヨウ | ケ | オ | 2 |
| 33 | | B1643-145-000 | FEED BAR SLIDE BLOCK, A | オクリ | タ | イ | コ | 1 |
| 34 | | B1651-245-000 | SCREW | フ | タ | タ | リ | 2 |
| 35 | | B1654-245-000 | FEED DRIVING HOLDER, A | ジ | ヨウ | ケ | カ | 1 |
| 36 | | B1655-245-000 | FEED DRIVING CAM HOLDER WASHER | ジ | ヨウ | ケ | カ | 1 |
| 37 | | B1637-245-000 | FEED DRIVING CAM HOLDER PLATE | ジ | ヨウ | ケ | カ | 1 |
| 38 | | SS-2090810-SP | SCREW 9/64-40 L= 7.5 | マ | ル | ヒ | ラ | 2 |
| 39 | #03 | B1630-245-0A0 | THROAT PLATE BASE ASM. | ハリ | イ | タ | イク | 1 |
| 40 | | SS-6081210-SP | SCREW 1/8-44 L=12 | ヒ | ラ | ネ | ジ | 2 |
| 41 | | SS-5110710-SP | SCREW 11/64-40 L=7 | ト | ラ | ス | ネ | 1 |
| 42 | | B1646-245-000 | THRUST COLLAR | ス | イ | ハ | イ | 1 |
| 43 | | SS-8110410-TP | SCREW 11/64-40 L= 3.5 | ト | メ | ネ | ジ | 2 |
| 44 | | SS-8701042-TP | SCREW 5/16-24 L=10.0 | ト | メ | ネ | ジ | 1 |
| 45 | | B1603-245-000 | FEED ROCKER | オクリ | タ | イ | ウ | 1 |
| 46 | | B1601-245-000 | FEED ROCK SHAFT | ス | イ | ハ | イ | 1 |
| 47 | | B1605-245-000 | FEED ROCKER SHAFT CRANK | ス | イ | ハ | イ | 1 |
| 48 | | SS-8150710-TP | SCREW 15/64-28 L=7 | ト | メ | ネ | ジ | 1 |
| 49 | | B1430-245-000 | DRIVING ROD CRANK | ハリ | ホ | ウ | オ | 1 |
| 50 | | B1424-158-000 | HINGE SCREW | ハリ | ホ | ウ | オ | 1 |
| 51 | #07 | D1613-245-E0C | FEED DOG | オクリ | ハ | | | 1 |
| 52 | | SS-7151210-SP | SCREW 15/64-28 L=12 | マ | ル | ヒ | ラ | 4 |
| 53 | | B1650-245-000 | FEED REGULATOR SUPPORTING BASE | オクリ | チ | ヨウ | セ | 1 |
| 54 | | SS-7151330-SP | SCREW 15/64-28 L=13.0 | マ | ル | ヒ | ラ | 1 |
| 55 | | SS-6151220-SP | SCREW 15/64-28 L=11.5 | ヒ | ラ | ネ | ジ | 1 |
| 56 | | NS-6680320-SP | NUT 9/32-28 | ロ | ウ | カ | ク | 1 |
| 57 | | B1620-245-000 | FEED REGULATOR | オクリ | チ | ヨウ | セ | 1 |
| 58 | | B1622-241-H00 | HINGE PIN | オクリ | チ | ヨウ | セ | 1 |
| 59 | | SS-8150830-SP | SCREW | ト | メ | ネ | ジ | 1 |
| 60 | | SS-8150710-TP | SCREW 15/64-28 L=7 | ト | メ | ネ | ジ | 1 |
| 61 | | SS-8150830-SP | SCREW | ト | メ | ネ | ジ | 1 |
| 62 | #03 | SS-7150940-SP | SCREW 15/64-28 L=9 | マ | ル | ヒ | ラ | 1 |
| 63 | | B1618-241-H00 | HINGE SCREW, B | フ | タ | タ | リ | 1 |
| 64 | | SD-0640231-SP | HINGE SCREW D= 6.35 H= 2.3 | タ | ン | ネ | ジ | 2 |
| 65 | | B2115-271-000 | NEEDLE THROW LINK | フリ | ハ | リ | ン | 1 |
| 66 | | B1147-141-H00 | PIN | オクリ | チ | ヨウ | セ | 1 |
| 67 | | B1148-141-H00 | SPRING | オクリ | チ | ヨウ | セ | 1 |
| 68 | | B1636-245-000 | BUSHING | オクリ | チ | ヨウ | セ | 1 |
| 69 | | B1638-141-H00 | SCREW | オクリ | チ | ヨウ | セ | 4 |
| 70 | | B1637-141-H00 | ECCENTRIC BUSHING | ハ | ン | シ | ン | 1 |
| 71 | | B1634-245-000 | STITCH LENGTH REGULATING SCREW | オクリ | チ | ヨウ | セ | 1 |
| 72 | | B1623-245-0A0 | STITCH DIAL ASM. | メ | モ | リ | イ | 1 |
| 73 | | SS-6121050-SP | SCREW 3/16-28 L= 9.5 | ヒ | ラ | ネ | ジ | 1 |
| 74 | | B1635-245-000 | FEED DRIVING CAM HOLDER, B | ジ | ヨウ | ケ | カ | 1 |
| 75 | | PS-0400182-K0 | SPRING PIN 4.0X18 | ス | プ | リ | ン | 2 |
| 76 | #05 | B1613-245-00C | FEED DOG | オクリ | ハ | | | 1 |

Note(注記)#01.....Special order part(For cloth)DSC-245

#02.....Special order part(For thin needle)

#03.....Standard part(For DSC-245)

#04.....Special order part(For cloth)DSC-245,4,5,6

#05.....Special order part(For thin needle)DSC-245-4,5,6

#06.....Standard part(For DSC-245-4,5,6)

#07.....Special order part(DSC-245-4,5,6)

#08.....Selective part

特別注文部品 (布用) DSC-245用

特別注文部品 (細針用) DSC-245用

標準部品(DSC-245用)

特別注文部品 (布用) DSC-245-4,5,6用

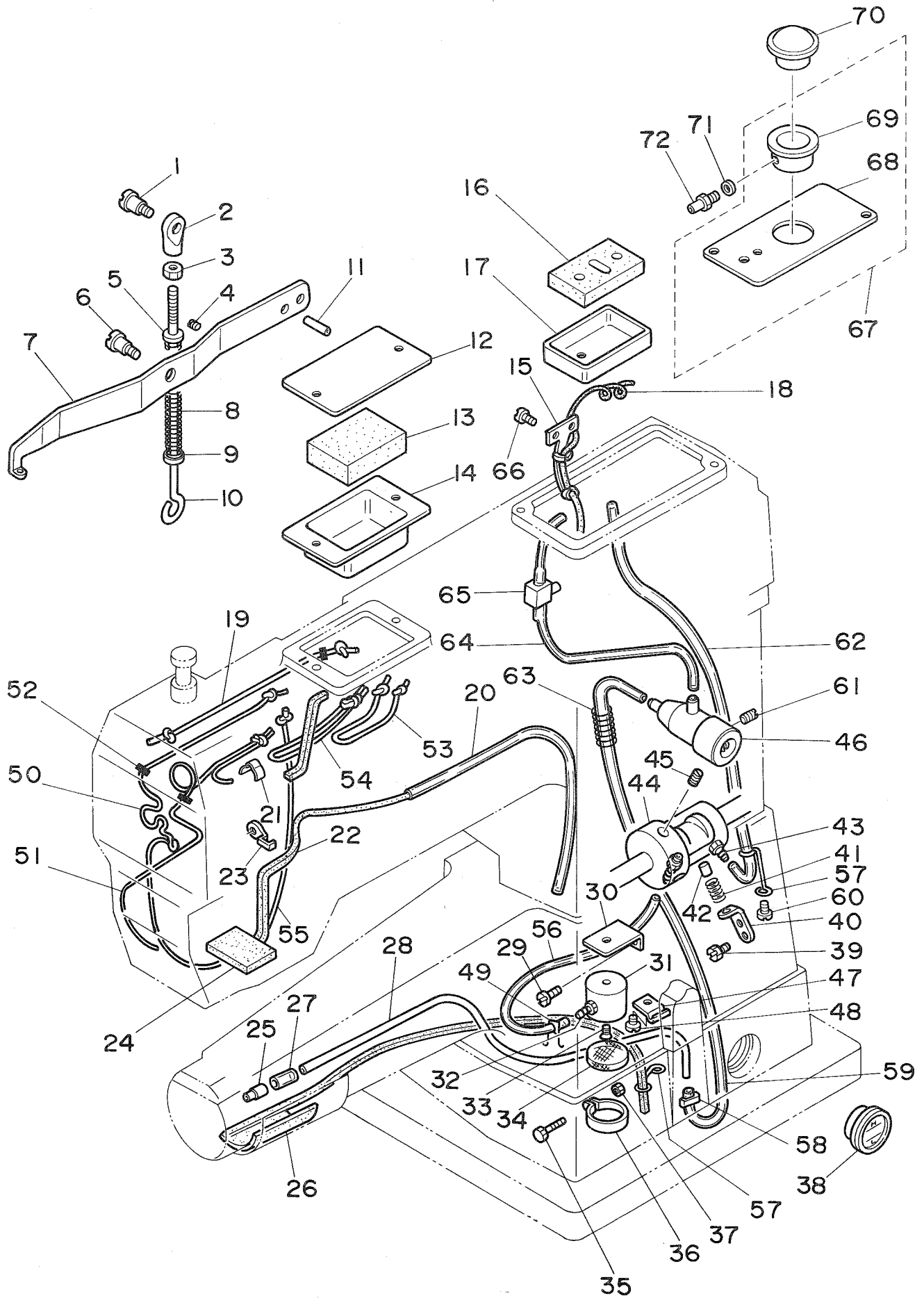
特別注文部品 (細針用) DSC-245-4,5,6用

標準部品(DSC-245-4,5,6用)

特別注文部品(DSC-245-4,5,6用)

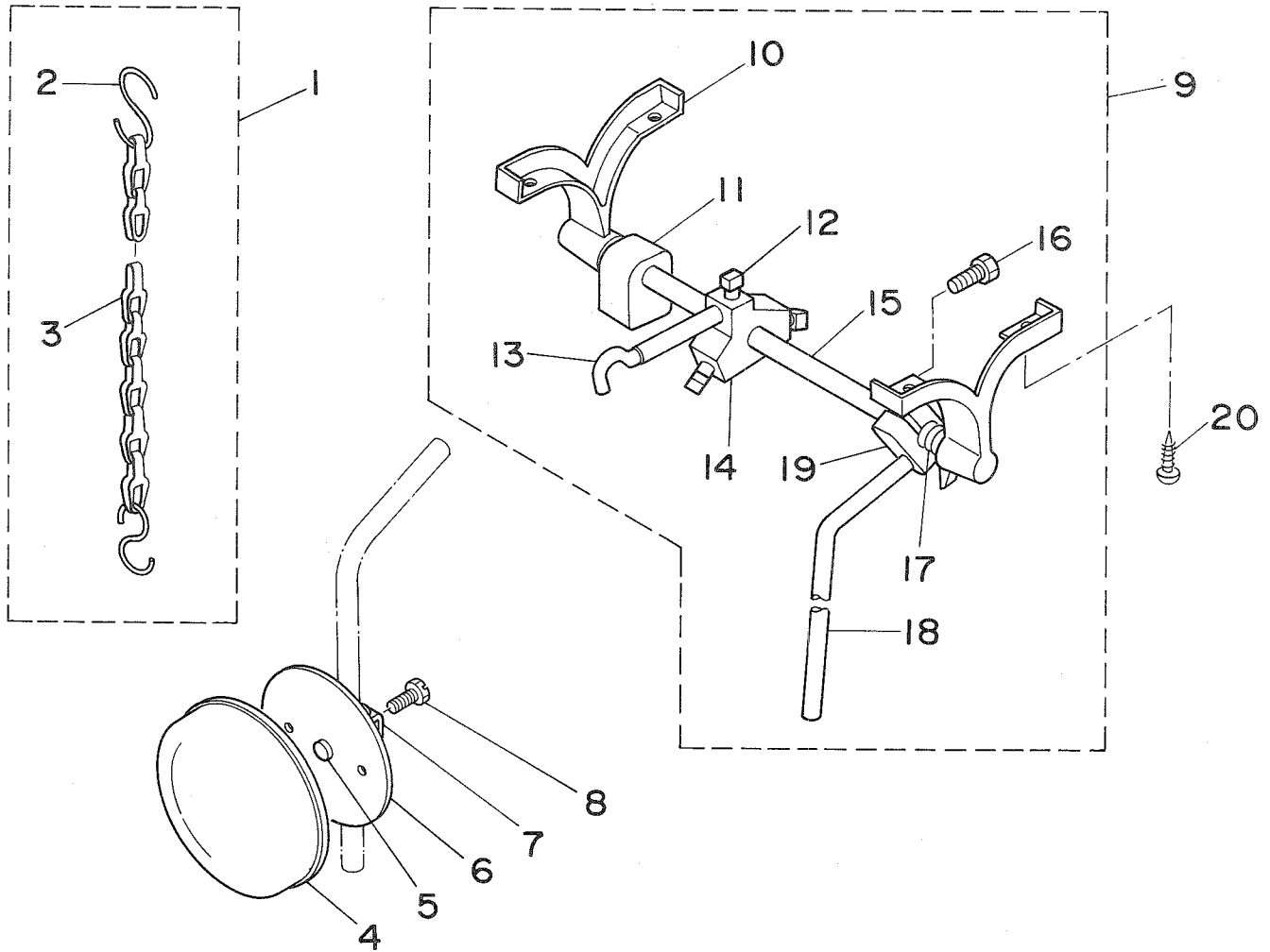
選択部品

9. OIL LUBRICATION COMPONENTS
給油関係



| REF. NO. | NOTE | PART NO. | DESCRIPTION | ヒ シ ム イ | AMT. |
|----------|------|-----------------|------------------------------|-------------------------|------|
| 1 | | SD-0790351-SP | HINGE SCREW D=7.9 H=3.5 | ﾀﾞﾝﾈｼﾞ D=7.9 H=3.5 | 1 |
| 2 | | B3416-141-H00-A | SWIVEL | ツリ ｾﾞｯｼﾞ | 1 |
| 3 | | NS-6620310-SP | NUT 3/16-32 | ﾛｯｸ ﾜｯｼﾞ 3/16-32 | 1 |
| 4 | | SS-7110540-SP | SCREW 11/64-40 L=5 | ﾏﾙﾋﾗﾈｼﾞ 11/64-40 L=5 | 1 |
| 5 | | B3418-245-000 | SPRING HOLDER | ﾋﾞｼﾞ ﾏﾞ ﾏﾞ ﾏﾞ ﾏﾞ ﾏﾞ | 1 |
| 6 | | SD-0790361-SP | HINGE SCREW D= 7.94 H= 3.6 | ﾀﾞﾝﾈｼﾞ D=7.94 H=3.6 | 1 |
| 7 | | D3410-241-E00 | PRESSER BAR LIFTING LEVER | ﾋﾞｼﾞ ﾏﾞ ﾏﾞ ﾏﾞ ﾏﾞ ﾏﾞ | 1 |
| 8 | | B3414-245-000 | SPRING | ｳﾝ ﾛ ﾞ ﾞ ﾞ ﾞ ﾞ ﾞ ﾞ ﾞ | 1 |
| 9 | | WP-0621016-SD | WASHER 6.2X13X1 | ﾋﾗ ﾞ ﾞ ﾞ ﾞ ﾞ ﾞ ﾞ ﾞ | 1 |
| 10 | | B3415-245-000 | LIFTING LEVER CONNECTING ROD | ツリ ﾞ ﾞ ﾞ ﾞ ﾞ ﾞ ﾞ ﾞ | 1 |
| 11 | | PS-0600241-00 | SPRING PIN 6X24 | ｽﾌﾟﾘﾝｸﾞ ﾋﾟﾝ 6.0X24 | 1 |
| 12 | | D3502-241-E00 | OIL TANK COVER | ﾀﾝｸ ﾎﾞ ﾞ ﾞ ﾞ ﾞ ﾞ ﾞ ﾞ ﾞ | 1 |
| 13 | | D3503-241-E00 | FELT | ﾀﾝｸ ﾎﾞ ﾞ ﾞ ﾞ ﾞ ﾞ ﾞ ﾞ ﾞ | 1 |
| 14 | | D3501-241-E00 | OIL TANK | ﾀﾝｸ ﾎﾞ ﾞ ﾞ ﾞ ﾞ ﾞ ﾞ ﾞ ﾞ | 1 |
| 15 | | B3502-115-000 | OIL WICK RETAINER | ｴｼﾞﾝ ﾞ ﾞ ﾞ ﾞ ﾞ ﾞ ﾞ ﾞ | 1 |
| 16 | | B8218-241-H00 | OIL PAD | ﾌﾞ ﾞ ﾞ ﾞ ﾞ ﾞ ﾞ ﾞ ﾞ | 1 |
| 17 | | B8217-241-H00 | OIL RESERVOIR | ﾌﾞ ﾞ ﾞ ﾞ ﾞ ﾞ ﾞ ﾞ ﾞ | 1 |
| 18 | | CQ-2020000-00 | OIL WICK | ｴｼﾞﾝ | 0.4 |
| 19 | | CQ-2020000-00 | OIL WICK | ｴｼﾞﾝ | 0.9 |
| 20 | | BP-6000000-00 | VINYL TUBE, WHITE D=6 | ﾋﾞ ﾞ ﾞ ﾞ ﾞ ﾞ ﾞ ﾞ ﾞ | 0.4 |
| 21 | | B1437-051-000 | OIL WICK RETAINER | ﾖｰ ﾞ ﾞ ﾞ ﾞ ﾞ ﾞ ﾞ ﾞ | 1 |
| 22 | | 103-21701 | OIL RETURN WICK | ｶﾝ ﾞ ﾞ ﾞ ﾞ ﾞ ﾞ ﾞ ﾞ | 1 |
| 23 | | B3508-512-000 | OIL FELT HOLDER | ｶﾝ ﾞ ﾞ ﾞ ﾞ ﾞ ﾞ ﾞ ﾞ | 1 |
| 24 | | D3504-241-E00 | OIL SPONGE | ｶﾝ ﾞ ﾞ ﾞ ﾞ ﾞ ﾞ ﾞ ﾞ | 1 |
| 25 | | B3525-245-000 | JOINT | ｼ ﾞ ﾞ ﾞ ﾞ ﾞ ﾞ ﾞ ﾞ ﾞ | 1 |
| 26 | | B3527-245-0A0 | CYLINDER COVER FELT ASM. | ｼ ﾞ ﾞ ﾞ ﾞ ﾞ ﾞ ﾞ ﾞ ﾞ | 1 |
| 27 | | BT-0400251-EC | TUBE HOSE, YELLOW | ｳ ﾞ ﾞ ﾞ ﾞ ﾞ ﾞ ﾞ ﾞ ﾞ | 0.3 |
| 28 | | B3523-245-000 | OIL TUBE | ｶ ﾞ ﾞ ﾞ ﾞ ﾞ ﾞ ﾞ ﾞ ﾞ | 1 |
| 29 | | SS-7111310-SP | SCREW 11/64-40 L=12.8 | ﾏﾙ ﾞ ﾞ ﾞ ﾞ ﾞ ﾞ ﾞ ﾞ ﾞ | 1 |
| 30 | | B3512-246-000 | SUCTION SET PLATE | ｷ ﾞ ﾞ ﾞ ﾞ ﾞ ﾞ ﾞ ﾞ ﾞ | 1 |
| 31 | | 101-26324 | SUCTION | ｷ ﾞ ﾞ ﾞ ﾞ ﾞ ﾞ ﾞ ﾞ ﾞ | 1 |
| 32 | | SQ-1150451-MZ | CONNECTING SCREW | ﾁ ﾞ ﾞ ﾞ ﾞ ﾞ ﾞ ﾞ ﾞ ﾞ | 1 |
| 33 | | SS-2110930-SP | SCREW 11/64-40 L=8.7 | ﾏﾙ ﾞ ﾞ ﾞ ﾞ ﾞ ﾞ ﾞ ﾞ ﾞ | 1 |
| 34 | | B1851-512-000 | FILTER SCREEN | ｷ ﾞ ﾞ ﾞ ﾞ ﾞ ﾞ ﾞ ﾞ ﾞ | 1 |
| 35 | | SS-7090910-SP | SCREW 9/64-40 L= 8.5 | ﾏﾙ ﾞ ﾞ ﾞ ﾞ ﾞ ﾞ ﾞ ﾞ ﾞ | 1 |
| 36 | | B1850-512-000 | BUSHING HOLDER | ｷ ﾞ ﾞ ﾞ ﾞ ﾞ ﾞ ﾞ ﾞ ﾞ | 1 |
| 37 | | NS-6090310-SP | NUT 9/64-40 | ﾛｯｸ ﾜｯｼﾞ 9/64-40 | 1 |
| 38 | | B3506-245-000 | OIL WINDOW | ﾌﾞ ﾞ ﾞ ﾞ ﾞ ﾞ ﾞ ﾞ ﾞ ﾞ | 1 |
| 39 | | SS-9111010-SP | SCREW 11/64-40 L=9.5 | ﾛｯｸ ﾜｯｼﾞ 11/64-40 L=9.5 | 2 |
| 40 | | D3502-245-E00 | PLUNGER HOLDER | ﾌ ﾞ ﾞ ﾞ ﾞ ﾞ ﾞ ﾞ ﾞ ﾞ | 1 |
| 41 | | B1214-038-000 | PLUNGER SPRING | ﾌ ﾞ ﾞ ﾞ ﾞ ﾞ ﾞ ﾞ ﾞ ﾞ | 1 |
| 42 | | B3534-155-000 | PLUNGER | ﾌ ﾞ ﾞ ﾞ ﾞ ﾞ ﾞ ﾞ ﾞ ﾞ | 1 |
| 43 | | SQ-1110401-MZ | CONNECTING SCREW | ﾁ ﾞ ﾞ ﾞ ﾞ ﾞ ﾞ ﾞ ﾞ ﾞ | 2 |
| 44 | | D3501-245-E00 | OIL PUMP SHAFT | ｷ ﾞ ﾞ ﾞ ﾞ ﾞ ﾞ ﾞ ﾞ ﾞ | 1 |
| 45 | | SM-8040602-TP | SCREW M4X0.7 L=6 | ﾄ ﾞ ﾞ ﾞ ﾞ ﾞ ﾞ ﾞ ﾞ ﾞ | 2 |
| 46 | | D3513-245-EA0 | OIL ADJUSTING ASM. | ｴ ﾞ ﾞ ﾞ ﾞ ﾞ ﾞ ﾞ ﾞ ﾞ | 1 |
| 47 | | B3524-245-000 | OIL TUBE HOLDER | ﾊ ﾞ ﾞ ﾞ ﾞ ﾞ ﾞ ﾞ ﾞ ﾞ | 1 |
| 48 | | SS-7110710-SP | SCREW 11/64-40 L=7 | ﾏﾙ ﾞ ﾞ ﾞ ﾞ ﾞ ﾞ ﾞ ﾞ ﾞ | 1 |
| 49 | | 101-26803 | OIL TUBE HOLDER | ﾊ ﾞ ﾞ ﾞ ﾞ ﾞ ﾞ ﾞ ﾞ ﾞ | 1 |
| 50 | | CQ-2020000-00 | OIL WICK | ｴｼﾞﾝ | 0.2 |
| 51 | | CQ-2020000-00 | OIL WICK | ｴｼﾞﾝ | 0.9 |
| 52 | | GES-12153000 | OIL WICK HOLDER | ｼ ﾞ ﾞ ﾞ ﾞ ﾞ ﾞ ﾞ ﾞ ﾞ | 3 |
| 53 | | CQ-2020000-00 | OIL WICK | ｴｼﾞﾝ | 0.1 |
| 54 | | CQ-2020000-00 | OIL WICK | ｴｼﾞﾝ | 0.2 |
| 55 | | CQ-2020000-00 | OIL WICK | ｴｼﾞﾝ | 0.3 |
| 56 | | BT-0500300-EA | OIL TUBE | ｳ ﾞ ﾞ ﾞ ﾞ ﾞ ﾞ ﾞ ﾞ ﾞ | 0.2 |
| 57 | | B3537-201-000 | OIL FELT HOLDER | ｶ ﾞ ﾞ ﾞ ﾞ ﾞ ﾞ ﾞ ﾞ ﾞ | 2 |
| 58 | | GES-12153000 | OIL WICK HOLDER | ｼ ﾞ ﾞ ﾞ ﾞ ﾞ ﾞ ﾞ ﾞ ﾞ | 1 |
| 59 | | BT-0500300-EA | OIL TUBE | ｳ ﾞ ﾞ ﾞ ﾞ ﾞ ﾞ ﾞ ﾞ ﾞ | 0.2 |
| 60 | | SS-7110710-SP | SCREW 11/64-40 L=7 | ﾏﾙ ﾞ ﾞ ﾞ ﾞ ﾞ ﾞ ﾞ ﾞ ﾞ | 1 |
| 61 | | SS-8150710-SP | SCREW 15/64-28 L=7 | ﾄ ﾞ ﾞ ﾞ ﾞ ﾞ ﾞ ﾞ ﾞ ﾞ | 1 |
| 62 | | BT-0500300-EA | OIL TUBE | ｳ ﾞ ﾞ ﾞ ﾞ ﾞ ﾞ ﾞ ﾞ ﾞ | 0.4 |
| 63 | | B3520-245-000 | SPRING | ﾊ ﾞ ﾞ ﾞ ﾞ ﾞ ﾞ ﾞ ﾞ ﾞ | 1 |
| 64 | | BT-0500300-EA | OIL TUBE | ｳ ﾞ ﾞ ﾞ ﾞ ﾞ ﾞ ﾞ ﾞ ﾞ | 0.3 |
| 65 | | B3521-245-000 | RUBBER JOINT | ﾄ ﾞ ﾞ ﾞ ﾞ ﾞ ﾞ ﾞ ﾞ ﾞ | 1 |
| 66 | | SS-7080510-TP | SCREW 1/8-44 L=4.5 | ﾏﾙ ﾞ ﾞ ﾞ ﾞ ﾞ ﾞ ﾞ ﾞ ﾞ | 2 |
| 67 | | B1150-245-0A0 | TOP COVER ASM. | ﾃ ﾞ ﾞ ﾞ ﾞ ﾞ ﾞ ﾞ ﾞ ﾞ | 1 |
| 68 | | B1150-245-000 | TOP COVER | ﾃ ﾞ ﾞ ﾞ ﾞ ﾞ ﾞ ﾞ ﾞ ﾞ | (1) |
| 69 | | B3505-245-000 | OIL SIGHT WINDOW BASE | ﾌ ﾞ ﾞ ﾞ ﾞ ﾞ ﾞ ﾞ ﾞ ﾞ | (1) |
| 70 | | B3520-586-000 | OIL SIGHT WINDOW | ﾌ ﾞ ﾞ ﾞ ﾞ ﾞ ﾞ ﾞ ﾞ ﾞ | 1 |
| 71 | | B3534-012-000 | GASKET | ﾊ ﾞ ﾞ ﾞ ﾞ ﾞ ﾞ ﾞ ﾞ ﾞ | 2 |
| 72 | | SQ-1110401-MZ | CONNECTING SCREW | ﾁ ﾞ ﾞ ﾞ ﾞ ﾞ ﾞ ﾞ ﾞ ﾞ | 2 |

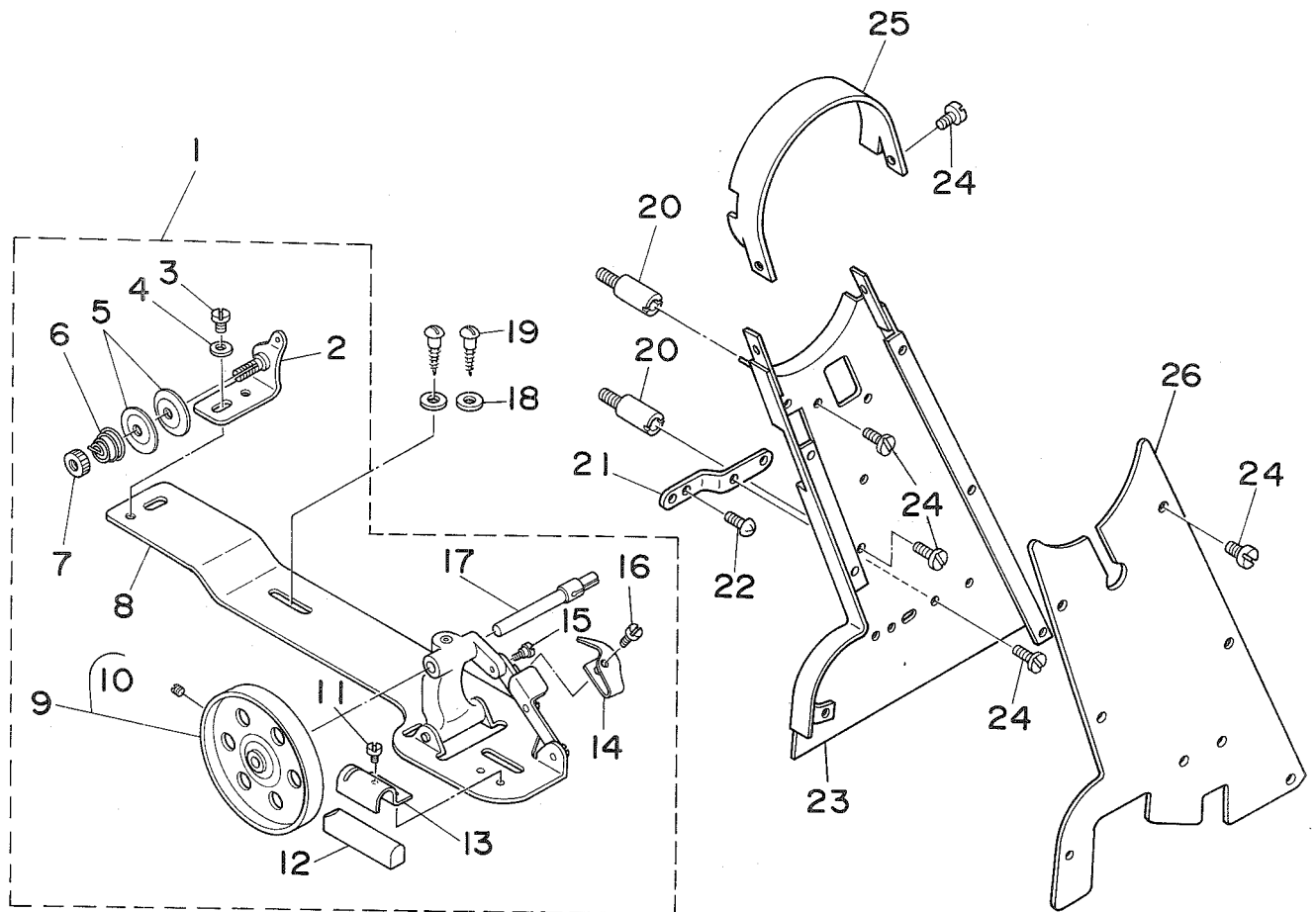
10. KNEE PRESS PLATE COMPONENTS
膝上げ装置関係



| REF.NO. | NOTE | PART NO. | DESCRIPTION | ヒソメイ | AMT. |
|---------|------|-----------------|----------------------------|-----------------------|------|
| 1 | | B3421-245-0A0 | CHAIN ASM. | ヒサアゲヨウクサリクミ | 1 |
| 2 | | B3421-245-000 | CHAIN | ヒサアゲヨウクサリ | (1) |
| 3 | | B8133-019-000 | S SHAPED HOOK | Sカクタカナク | (3) |
| 4 | | B3431-552-000-A | KNEE PRESS PLATE COVER | ヒサアテイタカハ- | 1 |
| 5 | | 110-24403 | RUBBER | ヒサアテゴム | 1 |
| 6 | | 110-23702 | KNEE PRESS PLATE | ヒサアテイタ | 1 |
| 7 | | 110-23801 | KNEE PRESS PLATE HOLDER | ヒサアテイタササエ | 1 |
| 8 | | SS-9151540-SR | SCREW 15/64-28 L=15 | ロツカクホルト 15/64-28 L=15 | 1 |
| 9 | | B3420-245-0A0 | KNEE LIFTER ASM. | ヒサアゲソウチクミ | 1 |
| 10 | | B3423-245-000 | KNEE PRESS ROD HOLDER | ササエ | (1) |
| 11 | | B3434-141-H00 | BRACKET | トメタルマ | (1) |
| 12 | | B3425-141-H00 | MOUNTING BRACKET SET SCREW | トメネジ | (3) |
| 13 | | B3425-245-000 | KNEE LIFTER ARM | ヒサアゲカイトメハネ | (1) |
| 14 | | B3424-141-H00 | MOUNTING BRACKET | マカリウチササエタルマ | (1) |
| 15 | | B3420-245-000 | MAIN SHAFT | シユジク | (1) |
| 16 | | SS-9182010-SN | SCREW 9/32-20 L=20 | ロツカクホルト 9/32-20 L=20 | (2) |
| 17 | | B3425-245-000 | KNEE LIFTER ARM | ヒサアゲカイトメハネ | (1) |
| 18 | | B3422-245-000 | KNEE LIFTER PLATE ROD | ヒサアゲタチシク | (1) |
| 19 | | B3433-141-H0A | BRACKET | ヒサアテタチシクトリツケウテ | (1) |
| 20 | | SK-1483200-SE | WOOD SCREW D=4.8 L=32 | サラモクネジ D=4.8 L=32 | 4 |

11. BOBBIN WINDER & BELT COVER COMPONENTS

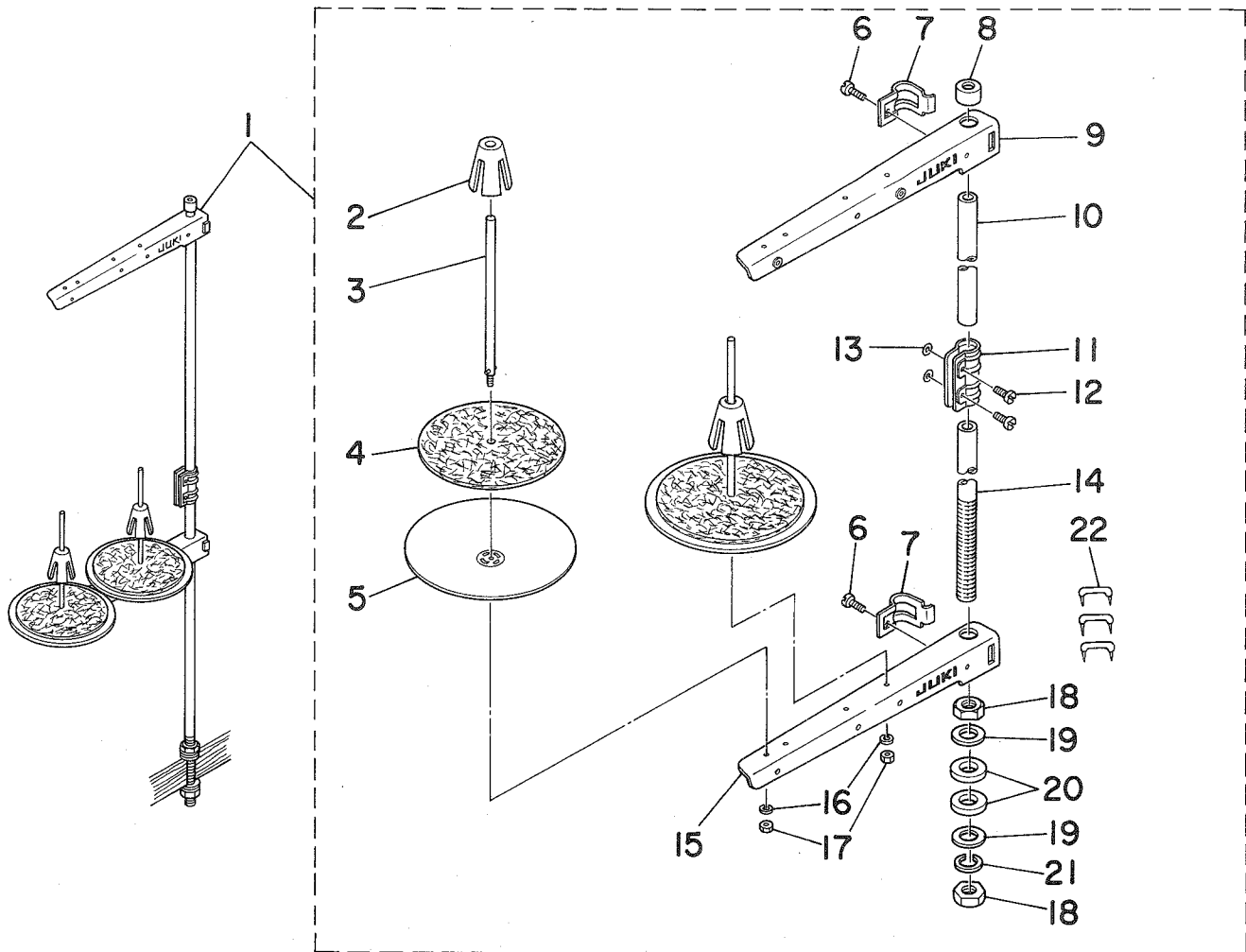
糸巻・ベルトカバー関係



| REF.NO. | NOTE | PART NO. | DESCRIPTION | ヒンメイ | AMT. |
|---------|------|---------------|-----------------------------|-----------------------|------|
| 1 | | B3201-012-0A0 | BOBBIN WINDER ASM. | イトマキ ソーチ | 1 |
| 2 | | B3223-012-0A0 | THREAD TENSION BRACKET ASM. | イトマキ イトチヨ-シホ-タイ クミ | (1) |
| 3 | | SS-7110840-SP | SCREW 11/64-40 L=7.8 | マルヒラネシ 11/64-40 L=7.8 | (1) |
| 4 | | WP-0501016-SC | WASHER 5X10.5X1 | ヒラサカネ 5X10.5X1 | (1) |
| 5 | | B3126-012-000 | TENSION DISC | イトチヨ-シガラ | (2) |
| 6 | | B3129-012-B00 | TENSION SPRING B | イトチヨ-シ ハネ B | (1) |
| 7 | | B3125-012-000 | THREAD TENSION STUD NUT | イトチヨ-シ ナット | (1) |
| 8 | | B3204-012-0A0 | BOBBIN WINDER BASE ASM. | イトマキタイ クミ | (1) |
| 9 | | B3214-012-0A0 | BOBBIN WINDER WHEEL ASM. | イトマキケルマ クミ | (1) |
| 10 | | SS-8110510-SP | SCREW 11/64-40 L=5 | トメネシ 11/64-40 L=5 | (1) |
| 11 | | SS-7110410-SP | SCREW 11/64-40 L=4 | マルヒラネシ 11/64-40 L=4 | (1) |
| 12 | | B3228-012-000 | RUBBER BRAKE | セイト-ヘルト | (1) |
| 13 | | B3229-012-000 | BRAKE CLAMP | セイト-ヘルト オサエイタ | (1) |
| 14 | | B3217-012-000 | STOP LATCH | ホ-ヒンオサエ | (1) |
| 15 | | SD-0490261-SP | HINGE SCREW D=4.9 H=2.6 | タ-ンネシ D=4.9 H=2.6 | (1) |
| 16 | | SS-7081310-SP | SCREW 1/8-44 L=12.5 | マルヒラネシ 1/8-44 L=12.5 | (1) |
| 17 | | B3212-012-000 | SPINDLE | イトマキジク | (1) |
| 18 | | WP-0501016-SC | WASHER 5X10.5X1 | ヒラサカネ 5X10.5X1 | 2 |
| 19 | | SK-3482500-SC | WOOD SCREW D=4.8 L=25 | マルモクネシ D=4.8 L=25 | 2 |
| 20 | | B9106-245-000 | BELT COVER SUPPORT BAR | ヘルトカハ-シチュウ | 2 |
| 21 | | B9108-245-000 | BELT COVER SUPPORT | ヘルトカハ-ササエイタ | 1 |
| 22 | | SS-6111140-SP | SCREW 11/64-40 L=11 | ヒラネシ 11/64-40 L=11 | 2 |
| 23 | | B9102-245-0A0 | BELT COVER ASM. | ヘルトカハ-(ケツコウ) | 1 |
| 24 | | SS-6110480-SP | SCREW 11/64-40 L=4.3 | ヒラネシ 11/64-40 L=4.3 | 12 |
| 25 | | B9101-245-000 | TOP COVER | トップカハ- | 1 |
| 26 | | B9104-245-0A0 | BELT COVER ASM. | ヘルトカハ-フタ(ケツコウ) | 1 |

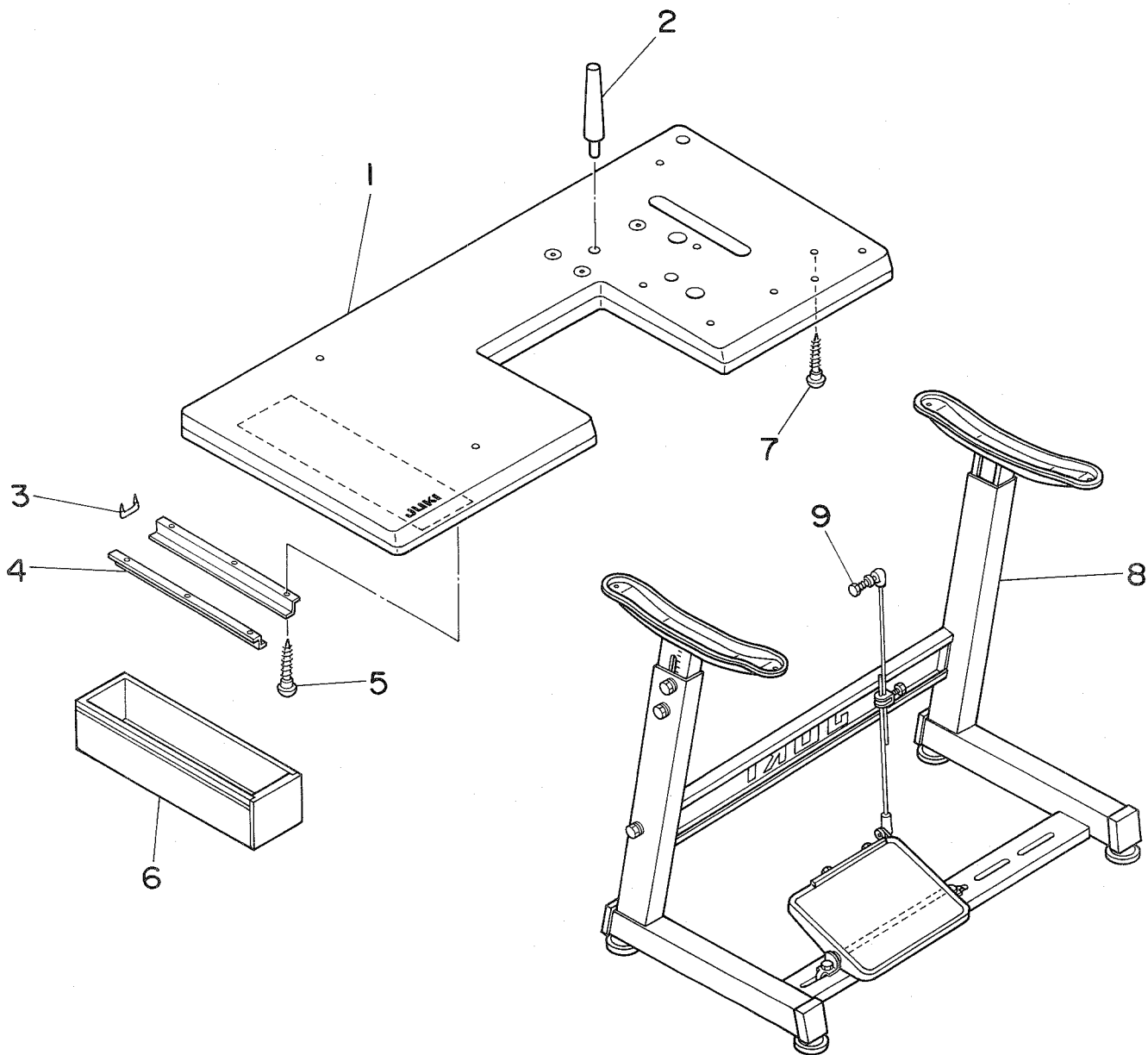
12. THREAD STAND COMPONENTS

糸立装置関係



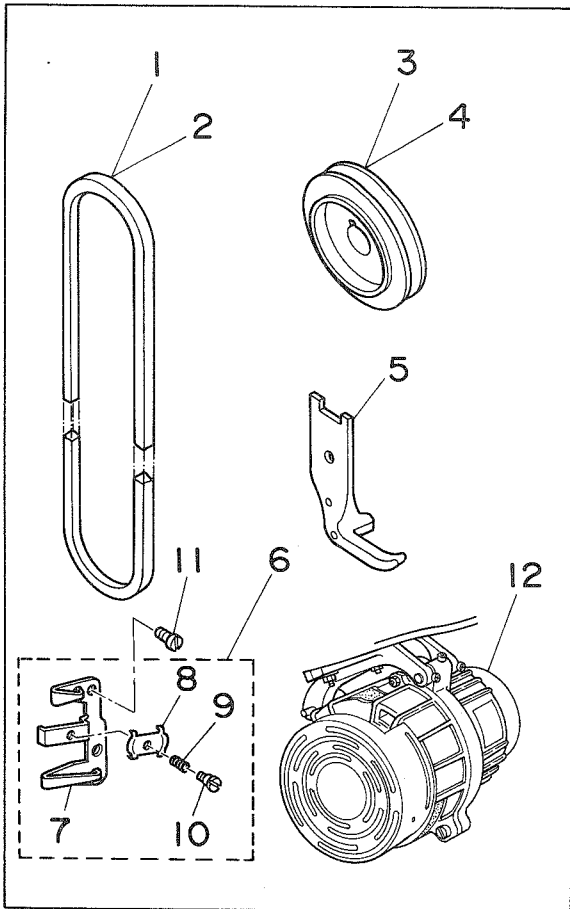
| REF.NO. | NOTE | PART NO. | DESCRIPTION | ヒ | ン | メ | イ | AMT. |
|---------|------|-----------------|---------------------------|---------|--------|-------------|-----------------|------|
| 1 | | 111-81559 | THREAD STAND ASM. | イトテ | ソウチ | クミ | | 1 |
| 2 | | 111-81906 | SPOOL RETAINER | イトマキ | フレ | メ | | (2) |
| 3 | | B3320-704-L00-A | SPOOL PIN | イトマキウケホ | ウ | | | (2) |
| 4 | | B3311-012-000 | SPOOL REST CUSHION | イトマキウケサ | | | | (2) |
| 5 | | 111-81807 | SPOOL REST | イトマキウケサ | ラ | | | (2) |
| 6 | | SM-6061610-SC | SCREW M6 L=16 | ヒラコネジ | M6 | L=15 | | (2) |
| 7 | | B3318-704-L00-A | THREAD GUIDE ARM JOINT | イトタテウテ | シメカナク | | | (2) |
| 8 | | B3311-704-000 | SPOOL REST ROD RUBBER CAP | イトタテホ | ホコ | ゴム | | (1) |
| 9 | | 111-81757 | THREAD GUIDE ASM. | イトタテウテ | B | クミ | | (1) |
| 10 | | 111-81609 | SPOOL REST ROD, UPPER | イトタテホ | ウ | ウ | | (1) |
| 11 | | B3305-704-000-A | SPOOL REST ROD JOINT | イトタテホ | ツキ | テ | | (1) |
| 12 | | SM-4051405-SE | SCREW M5X0.8 L=14 | ナ | コネジ | M5X0.8 | L=14 | (2) |
| 13 | | NM-6050001-SE | NUT M5X0.8 | ロツカクナツ | M5X0.8 | 1 | シユ | (2) |
| 14 | | 111-81500 | SPOOL REST ROD, LOWER | イトタテホ | ウ | シタ | | (1) |
| 15 | | 111-81708 | SPOOL REST ARM | イトタテウテ | B | | | (1) |
| 16 | | WS-0510002-KN | SPRING WASHER 5.1X8.5X1.3 | ハ | ネサ | ガ | ネ 5.1X9.2X1.3 | (2) |
| 17 | | NM-6050001-SE | NUT M5X0.8 | ロツカクナツ | M5X0.8 | 1 | シユ | (2) |
| 18 | | B3317-704-000 | NUT C15 | イトタテホ | ト | メナツ | | (2) |
| 19 | | WP-1702600-S0 | WASHER 17X30X2.6 | ヒラサ | ガ | ネ 17X30X2.6 | | (2) |
| 20 | | D3310-555-D00 | RUBBER WASHER | イトタテホ | ホ | シ | ゴム | (2) |
| 21 | | WS-1643202-KR | SPRING WASHER | ハ | ネサ | ガ | ネ 16.4X26.6X3.2 | (1) |
| 22 | | MA0-11532000 | STAPLE | ユ | ト | ステツ | ル | (3) |

13. TABLE COMPONENTS
脚卓関係

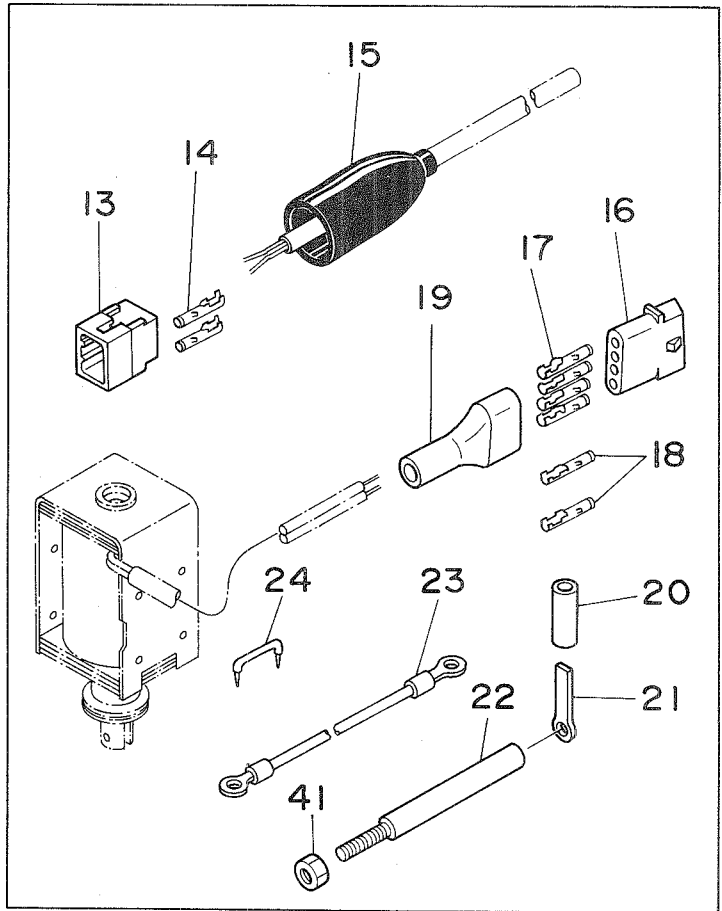


| REF.NO. | NOTE | PART NO. | DESCRIPTION | ヒ | ソ | メ | イ | AMT. |
|---------|------|---------------|-----------------------|--|---|---|---|------|
| 1 | | D8201-245-E00 | TABLE | テ-ブル | | | | 1 |
| 2 | | B8204-245-000 | FRAME SUPPORT BAR | トウブ ^サ サ ^イ ホ ^ウ | | | | 1 |
| 3 | | D8204-555-D00 | DRAWER STOPPER | ヒキタ ^シ ストツパ [°] | | | | 1 |
| 4 | | B8204-012-000 | DRAWER SUPPORT | ヒキタ ^シ ササ ^イ | | | | 2 |
| 5 | | SK-3311600-SE | WOOD SCREW D=3.1 L=16 | モクネジ [°] D=3.1 L=16 | | | | 6 |
| 6 | | 118-49502 | DRAWER | ヒキタ ^シ | | | | 1 |
| 7 | | SK-3514000-SC | WOOD SCREW D=5.1 L=40 | マルモクネジ [°] | | | | 4 |
| 8 | | B8101-552-0B0 | Z SHAPED STAND ASM. | Zキヤク クミ | | | | 1 |
| 9 | | D7114-555-BA0 | CONNECTING ROD ASM. | レンケツホ [°] ツキ ^テ クミ | | | | 1 |

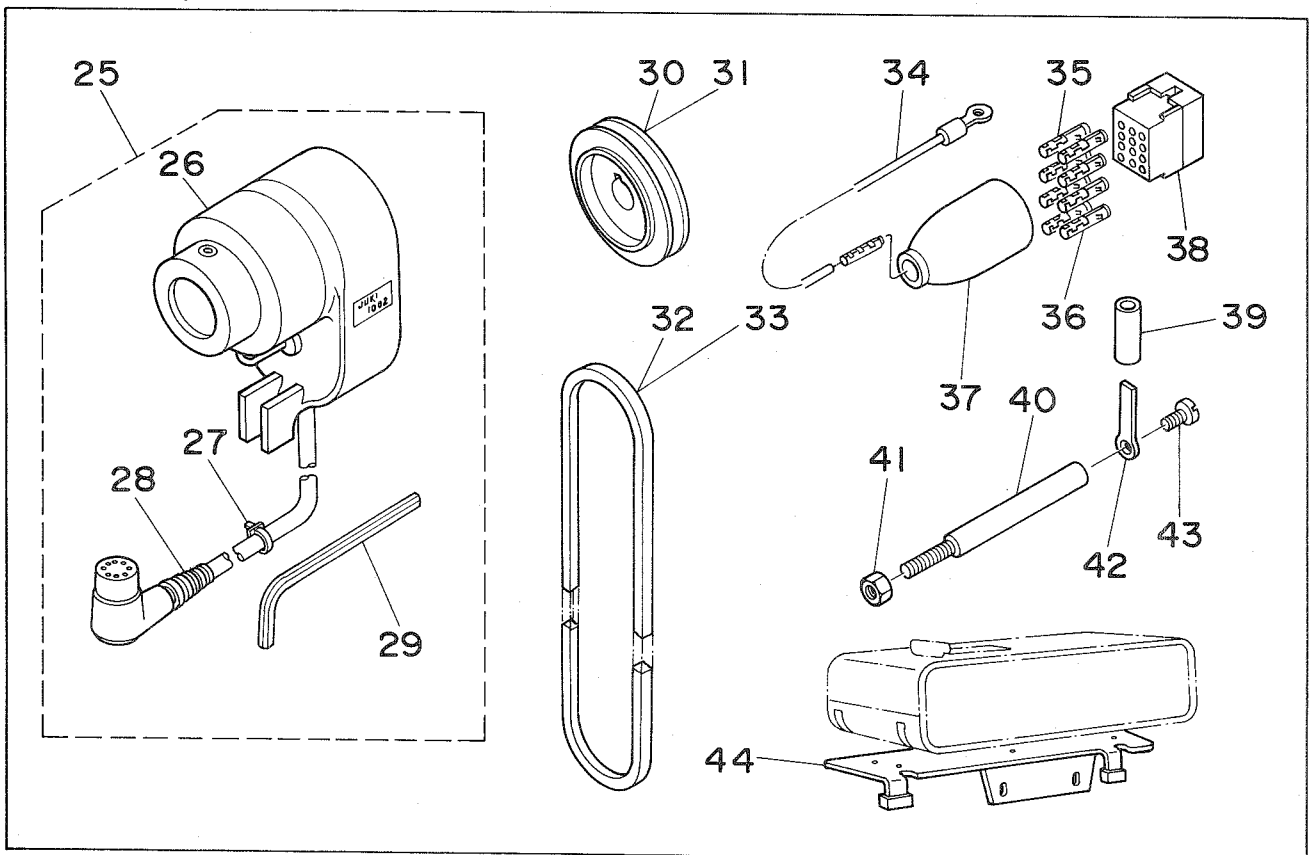
14. EXCLUSIVE PARTS FOR DSC-245
DSC-245専用部品



15. CORD COMPONENTS (FOR DSC-245-4)
コード関係(DSC-245-4)用



16. CORD COMPONENTS (FOR DSC-245-5)
コード関係(DSC-245-5)用



| REF.NO. | NOTE | PART NO. | DESCRIPTION | ヒンメイ | AMT. |
|---------|------|----------------|-----------------------------|---------------------|------|
| 1 | #01 | MTJ-VM005700 | V-BELT, 57 INCH | Vベルト 57インチ | 1 |
| 2 | #02 | MTJ-VM005600 | V-BELT, 56 INCH | Vベルト 56インチ | 1 |
| 3 | #01 | MTK-P0115000 | MOTOR PULLEY P.D.C 115 | モータプーリ P.D.C 115 | 1 |
| 4 | #02 | MTK-P0095000 | MOTOR PULLEY P.D.C 95 | モータプーリ P.D.C 95 | 1 |
| 5 | | B1524-245-00A | PRESSER FOOT | オサエアシ | 1 |
| 6 | | B1130-521-0A0 | THREAD GUIDE ASM., LOWER | イトアンナイ シタ クミ | 1 |
| 7 | | B1130-521-000 | THREAD GUIDE | イトアンナイ シタ | (1) |
| 8 | | B1131-521-000 | THREAD PRESSER PLATE | ハリイト オサエイタ | (1) |
| 9 | | B1132-521-000 | THREAD PRESSER PLATE SPRING | ハリイト オサエイタ ハネ | (1) |
| 10 | | SD-0380551-SL | HINGE SCREW D= 3.80 H= 5.5 | タネネジ D=3.8 H=5.5 | (1) |
| 11 | | SS-2090710-SP | SCREW 9/64-40 L=7 | マルサラネジ 9/64-40 L=7 | 2 |
| 12 | | MTL-4200020S | MOTOR | モータ クミ | 1 |
| 13 | | D6029-555-B0A | NYLON PLUG 6P | 6P ナイロンプラグ | 1 |
| 14 | #03 | D6043-555-B00 | PIN TERMINAL, MALE | ピン ターミナル オス | 2 |
| 15 | #03 | D6001-555-B00 | PLUG COVER | プラグ カバー A | 1 |
| 16 | | MAI-15043000 | NYLON RECEPTACLE 4P | 4P レセプタクル | 1 |
| 17 | #03 | D6042-555-B00 | PIN-SHAPE TERMINAL, FEMALE | ピン ターミナル メス | 4 |
| 18 | #04 | D6042-555-B00 | PIN-SHAPE TERMINAL, FEMALE | ピン ターミナル メス | 2 |
| 19 | | D6009-555-D0A | 4-POLE NYLON PLUG COVER | プラグカバー 4P クロ | 1 |
| 20 | | BT-0630520-Z0 | HOLDER COVER | セツイン チュブ | 0.1 |
| 21 | | D7102-245-E00 | SYNCHRONIZER HOLDER PLATE | ケンシュツキササエイタ | 1 |
| 22 | | D7101-245-E00 | SYNCHRONIZER HOLDER STUD | ケンシュツキササエシク | 1 |
| 23 | | 100-39451 | GROUND WIRE ASM. | グラウンドセン クミ | 1 |
| 24 | | MA0-11532000 | STAPLE | コート ステツプル | 2 |
| 25 | | M8512-120-BB0 | BB-TYPE SYNCHRONIZER ASM. | BBシキ シンクロナイザ - クミ | 1 |
| 26 | | M8512-120-B0S | SYNCHRONIZER | ケンシュツキ ホンタイ | (1) |
| 27 | | M9628-110-000 | CLIP | ナイロンバンド | (1) |
| 28 | | M8512-120-00S | SYNCHRONIZER CABLE | シンクロナイザ ケイブル | (1) |
| 29 | | B9141-372-000 | HEXAGONAL WRENCH SMALL. | ロツカクホ - スハナ (タネイ) | (1) |
| 30 | #01 | MTS-P0115000-A | MOTOR PULLEY | モータプーリ | 1 |
| 31 | #02 | MTS-P0095000-A | MOTOR PULLEY | モータプーリ | 1 |
| 32 | #01 | MTJ-VM005700 | V-BELT, 57 INCH | Vベルト 57インチ | 1 |
| 33 | #02 | MTJ-VM005600 | V-BELT, 56 INCH | Vベルト 56インチ | 1 |
| 34 | | B6037-505-0A0 | GROUND WIRE ASM. | アースコート クミ | 1 |
| 35 | #05 | D6043-555-B00 | PIN TERMINAL, MALE | ピン ターミナル オス | 6 |
| 36 | #06 | D6043-555-B00 | PIN TERMINAL, MALE | ピン ターミナル オス | 2 |
| 37 | | M9637-110-000 | 12-POLE PLUG COVER | プラグカバー 12P | 1 |
| 38 | | M9640-110-000 | 12-POLE PLUG | ナイロンプラグ 12P | 1 |
| 39 | | BT-0630520-Z0 | HOLDER COVER | セツイン チュブ | 0.1 |
| 40 | | D7101-245-E00 | SYNCHRONIZER HOLDER STUD | ケンシュツキササエシク | 1 |
| 41 | | NS-6150430-SP | NUT 15/64-28 | ロツカクナツ 15/64-28 | 1 |
| 42 | | D7102-245-E00 | SYNCHRONIZER HOLDER PLATE | ケンシュツキササエイタ | 1 |
| 43 | | SS-7110710-SP | SCREW 11/64-40 L=7 | マルヒラネジ 11/64-40 L=7 | 1 |
| 44 | | D9115-245-EA0 | CPU BOX HOLDER ASM. | CPNトリツケイタ クミ | 1 |

Note(注記)#01.....For 50Hz

50Hz用

#02.....For 60Hz

60Hz用

#03.....For DSC-245-4-2B

DSC-245-4-2B用

#04.....For DSC-245-4-1B

DSC-245-4-1B用

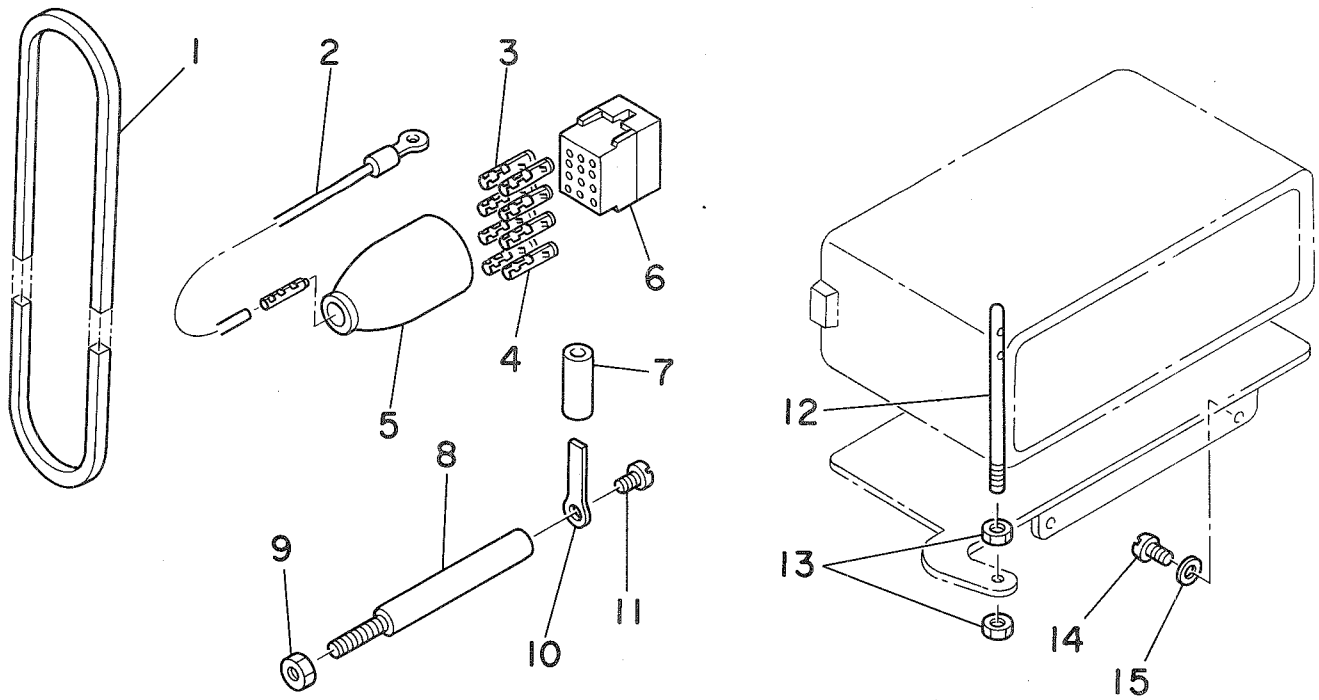
#05.....For DSC-245-5-2B

DSC-245-5-2B用

#06.....For DSC-245-5-2

DSC-245-5-2用

17. CORD COMPONENTS (FOR DSC-245-6)
コード関係(DSC-245-6)用



| REF.NO. | NOTE | PART NO. | DESCRIPTION | ヒンメイ | AMT. |
|---------|------|------------------|---------------------------|-----------------------|------|
| 1 | | MTJ-VM005300 | V BELT 50HZ 53INCH | Vベルト 53インチ | 1 |
| 2 | | B6037-505-0A0 | GROUND WIRE ASM. | アースコート クミ | 1 |
| 3 | #01 | D6043-555-B00 | PIN TERMINAL, MALE | ピン ターミナル オス | 6 |
| 4 | #02 | D6043-555-B00 | PIN TERMINAL, MALE | ピン ターミナル オス | 2 |
| 5 | | M9637-110-000 | 12-POLE PLUG COVER | プラグカバー 12P | 1 |
| 6 | | M9640-110-000 | 12-POLE PLUG | ナイロンプラグ 12P | 1 |
| 7 | | BT-0630520-Z0 | HOLDER COVER | セツイン チュブ | 0.1 |
| 8 | | D7101-245-E00 | SYNCHRONIZER HOLDER STUD | ケンシユツキササシゲク | 1 |
| 9 | | NS-6150430-SP | NUT 15/64-28 | ロツカクナツ 15/64-28 | 1 |
| 10 | | D7102-245-E00 | SYNCHRONIZER HOLDER PLATE | ケンシユツキササシイタ | 1 |
| 11 | | SS-7110710-SP | SCREW 11/64-40 L=7 | マルヒラネジ 11/64-40 L=7 | 1 |
| 12 | | B1114-517-000 | NEEDLE THREAD GUIDE PIN | イトアンナイボ | 1 |
| 13 | | NS-6620310-SP | NUT 3/16-32 | ロツカクナツ 3/16-32 | 2 |
| 14 | | SS-7110910-SP | SCREW | マルヒラネジ 11/64-40 L=8.5 | 2 |
| 15 | | WP-0501016-SD | WASHER 5X10.5X1 | ヒラサカネ 5X10.5X1 | 2 |
| | | Note(注記)#01..... | For DSC-245-6-2B | DSC-245-6-2B用 | |
| | | #02..... | For DSC-245-6-2 | DSC-245-6-2用 | |

NUMERICAL INDEX OF PARTS

索引

| Part No. | Page | Ref. | Part No. | Page | Ref. | Part No. | Page | Ref. | Part No. | Page | Ref. |
|---------------|------|------|---------------|------|------|-----------------|------|------|---------------|------|------|
| 品番 | 頁 | No. | 品番 | 頁 | No. | 品番 | 頁 | No. | 品番 | 頁 | No. |
| BP-3000000-00 | 14 | 23 | B1423-245-000 | 6 | 39 | B1802-245-000 | 10 | 30 | B3506-245-000 | 18 | 38 |
| BP-6000000-00 | 18 | 20 | B1424-158-000 | 6 | 58 | B1803-245-000 | 10 | 34 | B3508-512-000 | 18 | 23 |
| BT-0400251-EC | 18 | 27 | B1424-158-000 | 16 | 50 | B1808-552-000 | 10 | 16 | B3512-246-000 | 18 | 30 |
| BT-0500300-EA | 18 | 56 | B1429-241-HA0 | 6 | 55 | B1809-245-0A0 | 10 | 17 | B3517-009-000 | 6 | 26 |
| BT-0500300-EA | 18 | 59 | B1430-245-000 | 16 | 49 | B1830-245-0A0 | 10 | 15 | B3520-245-000 | 18 | 63 |
| BT-0500300-EA | 18 | 62 | B1431-241-HA0 | 6 | 56 | B1837-245-0A0 | 10 | 11 | B3520-245-000 | 18 | 70 |
| BT-0500300-EA | 18 | 64 | B1434-245-000 | 6 | 60 | B1838-245-000 | 10 | 12 | B3521-245-000 | 18 | 65 |
| BT-0630520-Z0 | 24 | 20 | B1437-051-000 | 18 | 21 | B1839-245-00B | 10 | 35 | B3522-245-000 | 2 | 50 |
| BT-0630520-Z0 | 24 | 39 | B1454-245-000 | 12 | 22 | B1850-512-000 | 18 | 36 | B3523-245-000 | 18 | 28 |
| BT-0630520-Z0 | 25 | 7 | B1456-141-H00 | 12 | 24 | B1851-512-000 | 18 | 34 | B3524-245-000 | 18 | 47 |
| B1105-245-00C | 4 | 66 | B1460-246-0A0 | 8 | 16 | B1853-512-00C-A | 10 | 24 | B3525-245-000 | 18 | 25 |
| B1105-245-000 | 4 | 35 | B1462-053-000 | 8 | 17 | B1905-245-000 | 8 | 1 | B3527-245-0A0 | 18 | 26 |
| B1114-280-000 | 14 | 26 | B1467-053-0A0 | 12 | 36 | B1906-051-000 | 8 | 3 | B3534-012-000 | 18 | 71 |
| B1114-517-000 | 25 | 12 | B1468-053-000 | 12 | 37 | B2115-271-000 | 16 | 65 | B3534-155-000 | 18 | 42 |
| B1116-246-000 | 2 | 40 | B1470-245-00B | 12 | 41 | B2733-761-000 | 14 | 24 | B3537-201-000 | 18 | 57 |
| B1117-246-000 | 2 | 38 | B1470-245-000 | 12 | 40 | B3114-761-000 | 4 | 50 | B6037-505-0A0 | 24 | 34 |
| B1118-241-H00 | 2 | 9 | B1471-245-000 | 8 | 30 | B3119-771-000 | 4 | 19 | B6037-505-0A0 | 25 | 2 |
| B1121-245-0A0 | 2 | 1 | B1501-241-H00 | 8 | 25 | B3120-125-000 | 4 | 20 | B8101-552-0B0 | 22 | 8 |
| B1128-246-000 | 2 | 27 | B1509-141-H00 | 8 | 7 | B3121-245-0A0 | 4 | 45 | B8133-019-000 | 19 | 3 |
| B1128-522-000 | 2 | 12 | B1510-141-H00 | 8 | 9 | B3121-245-000 | 4 | 52 | B8204-012-000 | 22 | 4 |
| B1129-563-000 | 4 | 1 | B1510-155-000 | 8 | 24 | B3122-053-000 | 4 | 56 | B8204-245-000 | 22 | 2 |
| B1130-051-000 | 2 | 16 | B1511-555-000 | 8 | 8 | B3123-051-000 | 4 | 59 | B8217-241-H00 | 18 | 17 |
| B1130-051-000 | 4 | 67 | B1512-051-000 | 8 | 23 | B3124-051-000 | 4 | 51 | B8218-241-H00 | 18 | 16 |
| B1130-521-0A0 | 4 | 36 | B1515-051-000 | 8 | 22 | B3125-012-000 | 4 | 17 | B9101-245-000 | 20 | 25 |
| B1130-521-0A0 | 24 | 6 | B1524-245-00A | 8 | 27 | B3125-012-000 | 4 | 46 | B9102-245-0A0 | 20 | 23 |
| B1130-521-000 | 4 | 37 | B1524-245-00A | 24 | 5 | B3125-012-000 | 20 | 7 | B9104-245-0A0 | 20 | 26 |
| B1130-521-000 | 24 | 7 | B1524-245-00B | 8 | 28 | B3126-012-000 | 20 | 5 | B9106-245-000 | 20 | 20 |
| B1131-521-000 | 4 | 38 | B1524-245-000 | 8 | 29 | B3126-051-000 | 4 | 23 | B9108-245-000 | 20 | 21 |
| B1131-521-000 | 24 | 8 | B1601-245-000 | 16 | 46 | B3126-051-000 | 4 | 49 | B9117-012-000 | 10 | 14 |
| B1131-562-000 | 4 | 63 | B1603-245-000 | 16 | 45 | B3127-051-000 | 4 | 12 | B9117-552-A00 | 10 | 13 |
| B1132-521-000 | 4 | 39 | B1605-245-000 | 16 | 47 | B3127-051-000 | 4 | 57 | B9141-372-000 | 24 | 29 |
| B1132-521-000 | 24 | 9 | B1613-245-00A | 16 | 1 | B3128-051-000 | 4 | 13 | | | |
| B1140-051-000 | 2 | 14 | B1613-245-00B | 16 | 2 | B3128-051-000 | 4 | 58 | CQ-2020000-00 | 8 | 6 |
| B1147-141-H00 | 16 | 66 | B1613-245-00C | 16 | 76 | B3129-012-B00 | 20 | 6 | CQ-2020000-00 | 18 | 18 |
| B1148-141-H00 | 16 | 67 | B1613-245-000 | 16 | 3 | B3129-053-000 | 4 | 21 | CQ-2020000-00 | 18 | 19 |
| B1150-245-0A0 | 2 | 10 | B1614-245-000 | 16 | 22 | B3129-053-000 | 4 | 47 | CQ-2020000-00 | 18 | 50 |
| B1150-245-0A0 | 18 | 67 | B1617-241-H00 | 16 | 19 | B3132-051-000 | 4 | 22 | CQ-2020000-00 | 18 | 51 |
| B1150-245-000 | 18 | 68 | B1618-241-H00 | 16 | 63 | B3132-051-000 | 4 | 48 | CQ-2020000-00 | 18 | 53 |
| B1156-115-000 | 6 | 25 | B1619-241-H00 | 16 | 20 | B3134-051-000 | 4 | 54 | CQ-2020000-00 | 18 | 54 |
| B1171-245-000 | 2 | 25 | B1620-245-000 | 16 | 57 | B3137-051-0A0 | 4 | 60 | CQ-2020000-00 | 18 | 55 |
| B1172-245-000 | 16 | 7 | B1621-241-H00 | 14 | 48 | B3137-527-0A0 | 4 | 16 | CQ-2520000-00 | 6 | 7 |
| B1173-245-000 | 4 | 32 | B1622-241-H00 | 16 | 58 | B3138-512-000 | 2 | 35 | CQ-2520000-00 | 6 | 16 |
| B1174-245-000 | 4 | 34 | B1623-245-0A0 | 16 | 72 | B3201-012-0A0 | 20 | 1 | CQ-2520000-00 | 6 | 23 |
| B1175-245-000 | 16 | 18 | B1624-586-000 | 14 | 52 | B3204-012-0A0 | 20 | 8 | CQ-2520000-00 | 6 | 78 |
| B1178-245-0A0 | 2 | 33 | B1627-241-H00 | 14 | 43 | B3212-012-000 | 20 | 17 | CQ-3030000-00 | 6 | 32 |
| B1179-245-000 | 2 | 34 | B1630-245-0A0 | 16 | 39 | B3214-012-0A0 | 20 | 9 | CQ-3030000-00 | 12 | 3 |
| B1180-245-000 | 2 | 43 | B1631-245-000 | 16 | 10 | B3214-047-000 | 4 | 6 | CQ-3030000-00 | 12 | 8 |
| B1181-245-000 | 2 | 47 | B1632-245-00C | 16 | 32 | B3216-047-000 | 4 | 4 | CQ-5050000-00 | 6 | 35 |
| B1182-245-000 | 2 | 46 | B1633-245-000 | 16 | 27 | B3217-012-000 | 20 | 14 | CS-1271012-SH | 6 | 20 |
| B1183-245-00A | 2 | 26 | B1634-245-000 | 16 | 71 | B3223-012-0A0 | 20 | 2 | | | |
| B1183-245-00B | 2 | 31 | B1635-245-000 | 16 | 74 | B3228-012-000 | 20 | 12 | D1105-245-E0C | 4 | 65 |
| B1202-241-H00 | 6 | 22 | B1636-245-000 | 16 | 68 | B3229-012-000 | 20 | 13 | D1105-245-E00 | 4 | 28 |
| B1203-051-000 | 6 | 14 | B1637-141-H00 | 16 | 70 | B3305-704-000-A | 21 | 11 | D1158-241-E00 | 2 | 7 |
| B1203-241-H00 | 6 | 17 | B1637-245-000 | 16 | 37 | B3311-012-000 | 21 | 4 | D1171-245-E00 | 2 | 24 |
| B1204-241-H00 | 6 | 5 | B1638-141-H00 | 16 | 69 | B3311-704-000 | 21 | 8 | D1173-245-E00 | 4 | 30 |
| B1206-245-000 | 6 | 31 | B1638-245-000 | 16 | 29 | B3317-704-000 | 21 | 18 | D1201-241-E00 | 6 | 8 |
| B1210-051-000 | 6 | 34 | B1639-245-000 | 16 | 26 | B3318-704-L00-A | 21 | 7 | D1227-245-E00 | 6 | 3 |
| B1211-141-H00 | 6 | 13 | B1640-245-000 | 16 | 17 | B3320-704-L00-A | 21 | 3 | D1401-245-E00 | 6 | 43 |
| B1211-226-000 | 6 | 11 | B1641-245-000 | 16 | 24 | B3414-245-000 | 18 | 8 | D1408-241-E00 | 6 | 44 |
| B1212-012-000 | 6 | 10 | B1642-245-000 | 16 | 25 | B3415-245-000 | 18 | 10 | D1411-241-E00 | 6 | 46 |
| B1213-012-000 | 6 | 9 | B1643-145-000 | 16 | 33 | B3416-141-H00-A | 18 | 2 | D1412-241-E00 | 6 | 45 |
| B1213-012-000 | 12 | 19 | B1644-245-000 | 16 | 30 | B3418-245-000 | 18 | 5 | D1420-241-E00 | 6 | 40 |
| B1214-038-000 | 18 | 41 | B1645-245-000 | 16 | 14 | B3420-245-0A0 | 19 | 9 | D1425-241-E00 | 6 | 52 |
| B1227-245-000 | 6 | 4 | B1646-241-H00 | 14 | 45 | B3420-245-000 | 19 | 15 | D1426-241-E00 | 6 | 53 |
| B1230-051-000 | 6 | 24 | B1646-245-000 | 16 | 42 | B3421-245-0A0 | 19 | 1 | D1450-055-B00 | 6 | 18 |
| B1301-241-H00 | 6 | 77 | B1647-245-000 | 16 | 8 | B3421-245-000 | 19 | 2 | D1453-241-E00 | 12 | 20 |
| B1302-241-H00 | 6 | 76 | B1648-122-000 | 14 | 46 | B3422-245-000 | 19 | 18 | D1455-055-B00 | 12 | 23 |
| B1303-241-H00 | 6 | 74 | B1649-245-000 | 16 | 11 | B3423-245-000 | 19 | 10 | D1457-055-B00 | 12 | 17 |
| B1305-012-0A0 | 6 | 64 | B1650-245-000 | 16 | 53 | B3424-141-H00 | 19 | 14 | D1458-241-E00 | 12 | 29 |
| B1306-155-0A0 | 6 | 67 | B1651-245-000 | 16 | 34 | B3425-141-H00 | 19 | 12 | D1459-241-E00 | 12 | 30 |
| B1306-155-0B0 | 6 | 63 | B1652-245-000 | 16 | 13 | B3425-245-000 | 19 | 13 | D1460-241-EA0 | 8 | 19 |
| B1307-155-0A0 | 6 | 72 | B1653-245-000 | 16 | 16 | B3425-245-000 | 19 | 17 | D1462-241-E00 | 8 | 21 |
| B1307-155-0D0 | 6 | 69 | B1654-245-000 | 16 | 35 | B3431-552-000-A | 19 | 4 | D1463-241-E00 | 8 | 13 |
| B1308-155-0B0 | 6 | 70 | B1655-245-000 | 16 | 36 | B3433-141-H0A | 19 | 19 | D1464-241-E00 | 8 | 12 |
| B1308-241-HA0 | 6 | 61 | B1659-484-000 | 12 | 32 | B3434-141-H00 | 19 | 11 | D1466-241-E00 | 12 | 38 |
| B1419-245-000 | 6 | 49 | B1702-012-000 | 12 | 18 | B3502-115-000 | 18 | 15 | D1480-241-EA0 | 12 | 1 |
| B1421-241-H00 | 6 | 37 | B1801-245-000 | 10 | 29 | B3505-245-000 | 18 | 69 | D1480-241-E00 | 12 | 2 |

NUMERICAL INDEX OF PARTS

索引

| Part No. 品番 | Page 頁 | Ref. No. | Part No. 品番 | Page 頁 | Ref. No. | Part No. 品番 | Page 頁 | Ref. No. | Part No. 品番 | Page 頁 | Ref. No. |
|-----------------|-----------|-------------|----------------|-----------|-------------|----------------|-----------|-------------|----------------|-----------|-------------|
| D1481-241-E00 | 12 | 4 | D3502-241-E00 | 18 | 12 | PS-0600502-KP | 4 | 25 | SS-7091110-SP | 14 | 47 |
| D1482-241-EA0 | 12 | 6 | D3502-245-E00 | 18 | 40 | PS-0600602-KP | 2 | 49 | SS-7091410-SP | 10 | 1 |
| D1482-241-E00 | 12 | 7 | D3503-241-E00 | 18 | 13 | | | | SS-7110410-SP | 20 | 11 |
| D1483-241-E00 | 12 | 9 | D3504-241-E00 | 18 | 24 | RE-0300000-K0 | 16 | 31 | SS-7110510-SP | 12 | 33 |
| D1484-241-E00 | 12 | 10 | D3505-241-E00 | 8 | 4 | RE-0400000-K0 | 14 | 9 | SS-7110540-SP | 10 | 21 |
| D1485-241-E00 | 12 | 11 | D3513-245-EA0 | 18 | 46 | RE-0600000-K0 | 14 | 16 | SS-7110540-SP | 18 | 4 |
| D1486-241-E00 | 12 | 14 | D6001-555-B00 | 24 | 15 | RE-0600000-K0 | 14 | 34 | SS-7110570-SP | 4 | 24 |
| D1606-245-E00 | 16 | 15 | D6009-555-D0A | 24 | 19 | RE-0700000-K0 | 6 | 59 | SS-7110710-SP | 2 | 3 |
| D1613-245-E0A | 16 | 4 | D6029-555-B0A | 24 | 13 | RE-0700000-K0 | 8 | 20 | SS-7110710-SP | 2 | 8 |
| D1613-245-E0B | 16 | 5 | D6042-555-B00 | 24 | 17 | RE-0700000-K0 | 16 | 21 | SS-7110710-SP | 2 | 11 |
| D1613-245-E0C | 16 | 51 | D6042-555-B00 | 24 | 18 | RO-0611801-00 | 2 | 30 | SS-7110710-SP | 4 | 27 |
| D1613-245-E00 | 16 | 12 | D6043-555-B00 | 24 | 14 | | | | SS-7110710-SP | 4 | 62 |
| D1621-241-E00 | 14 | 41 | D6043-555-B00 | 24 | 35 | SD-0380551-SL | 4 | 40 | SS-7110710-SP | 10 | 68 |
| D1624-241-E00 | 14 | 25 | D6043-555-B00 | 24 | 36 | SD-0380551-SL | 24 | 10 | SS-7110710-SP | 12 | 13 |
| D1630-245-EA0 | 16 | 9 | D6043-555-B00 | 25 | 3 | SD-0470281-SP | 4 | 11 | SS-7110710-SP | 12 | 15 |
| D1680-141-E00 | 14 | 15 | D6043-555-B00 | 25 | 4 | SD-0470281-SP | 4 | 55 | SS-7110710-SP | 14 | 1 |
| D1681-241-E00 | 14 | 17 | D7101-245-E00 | 24 | 22 | SD-0490261-SP | 20 | 15 | SS-7110710-SP | 14 | 19 |
| D1684-141-E00-A | 14 | 35 | D7101-245-E00 | 24 | 40 | SD-0640231-SP | 16 | 64 | SS-7110710-SP | 14 | 38 |
| D1686-241-E00 | 14 | 31 | D7101-245-E00 | 25 | 8 | SD-0640321-SP | 10 | 27 | SS-7110710-SP | 18 | 48 |
| D1687-141-E00 | 14 | 20 | D7102-245-E00 | 24 | 21 | SD-0720331-SP | 14 | 30 | SS-7110710-SP | 18 | 60 |
| D1687-141-E00 | 14 | 37 | D7102-245-E00 | 24 | 42 | SD-0720331-SP | 14 | 32 | SS-7110710-SP | 24 | 43 |
| D1907-241-E00 | 8 | 5 | D7102-245-E00 | 25 | 10 | SD-0790351-SP | 18 | 1 | SS-7110710-SP | 25 | 11 |
| D2120-555-C00 | 10 | 69 | D7114-555-BA0 | 22 | 9 | SD-0790361-SP | 18 | 6 | SS-7110840-SP | 20 | 3 |
| D2120-555-C00 | 14 | 39 | D8201-245-E00 | 22 | 1 | SD-0800352-SP | 2 | 39 | SS-7110910-SP | 10 | 59 |
| D2401-245-E00 | 10 | 7 | D8204-555-D00 | 22 | 3 | SD-0800481-SP | 8 | 10 | SS-7110910-SP | 10 | 75 |
| D2402-245-E00 | 10 | 9 | D9115-245-EA0 | 24 | 44 | SK-1483200-SE | 19 | 20 | SS-7110910-SP | 25 | 14 |
| D2403-245-E00 | 10 | 40 | | | | SK-3311600-SE | 22 | 5 | SS-7110910-TP | 6 | 38 |
| D2404-245-E00 | 10 | 46 | GES-12153000 | 18 | 52 | SK-3482500-SC | 20 | 19 | SS-7110910-TP | 6 | 42 |
| D2405-245-E00 | 10 | 31 | GES-12153000 | 18 | 58 | SK-3514000-SC | 22 | 7 | SS-7111120-SP | 12 | 5 |
| D2406-245-E00 | 10 | 47 | | | | SM-4051405-SE | 21 | 12 | SS-7111310-SP | 8 | 18 |
| D2407-245-E00 | 10 | 44 | HW-5001400-00 | 14 | 13 | SM-6061610-SC | 21 | 6 | SS-7111310-SP | 18 | 29 |
| D2408-245-E00 | 10 | 38 | | | | SM-6081552-TP | 2 | 28 | SS-7111410-SP | 10 | 23 |
| D2409-245-E00 | 10 | 51 | MAI-15043000 | 24 | 16 | SM-8040602-TP | 18 | 45 | SS-7121410-SP | 14 | 29 |
| D2410-245-E00 | 10 | 49 | MAO-11532000 | 21 | 22 | SQ-1110401-MZ | 18 | 43 | SS-7150740-SP | 8 | 11 |
| D2411-245-E00 | 10 | 57 | MAO-11532000 | 24 | 24 | SQ-1110401-MZ | 18 | 72 | SS-7150940-SP | 2 | 6 |
| D2412-245-E00 | 10 | 20 | MAT-81126T00 | 14 | 14 | SQ-1150451-MZ | 18 | 32 | SS-7150940-SP | 16 | 62 |
| D2413-141-E00 | 10 | 55 | MC-3720018-00 | 6 | 51 | SS-2090710-SP | 2 | 17 | SS-7151210-SP | 6 | 57 |
| D2413-141-E00 | 10 | 77 | MDP-170B1800 | 6 | 50 | SS-2090710-SP | 2 | 32 | SS-7151210-SP | 14 | 10 |
| D2413-245-E00 | 10 | 25 | MTJ-VM005300 | 25 | 1 | SS-2090710-SP | 4 | 2 | SS-7151210-SP | 14 | 33 |
| D2414-141-E00 | 10 | 79 | MTJ-VM005600 | 24 | 2 | SS-2090710-SP | 4 | 31 | SS-7151210-SP | 16 | 52 |
| D2414-245-E00 | 10 | 62 | MTJ-VM005600 | 24 | 33 | SS-2090710-SP | 4 | 33 | SS-7151330-SP | 16 | 54 |
| D2415-245-EA0 | 10 | 76 | MTJ-VM005700 | 24 | 1 | SS-2090710-SP | 4 | 41 | SS-7620750-SP | 14 | 22 |
| D2416-245-E00 | 10 | 52 | MTJ-VM005700 | 24 | 32 | SS-2090710-SP | 4 | 68 | SS-7620750-SP | 14 | 40 |
| D2417-245-EA0 | 10 | 53 | MTK-P0095000 | 24 | 4 | SS-2090710-SP | 24 | 11 | SS-7621040-SP | 8 | 14 |
| D2418-245-E00 | 10 | 61 | MTK-PO115000 | 24 | 3 | SS-2090810-SP | 16 | 38 | SS-7621040-SP | 8 | 15 |
| D2419-245-E00 | 10 | 26 | MTL-4200020S | 24 | 12 | SS-2110915-SP | 4 | 29 | SS-7680870-SP | 2 | 29 |
| D2420-245-E00 | 10 | 4 | MTS-PO095000-A | 24 | 31 | SS-2110930-SP | 18 | 33 | SS-7681750-TP | 6 | 30 |
| D2421-245-E00 | 10 | 64 | MTS-PO115000-A | 24 | 30 | SS-3090520-SP | 2 | 15 | SS-8090410-SP | 10 | 22 |
| D2422-245-E0A | 10 | 10 | M8512-120-BB0 | 24 | 25 | SS-3090610-SP | 4 | 42 | SS-8110410-TP | 16 | 43 |
| D2422-245-E00 | 10 | 28 | M8512-120-B0S | 24 | 26 | SS-3090610-SP | 4 | 64 | SS-8110510-SP | 2 | 13 |
| D2423-245-E00 | 10 | 54 | M8512-120-00S | 24 | 28 | SS-3090710-TP | 4 | 18 | SS-8110510-SP | 20 | 10 |
| D2423-245-E00 | 10 | 78 | M9628-110-000 | 24 | 27 | SS-4080610-SP | 4 | 61 | SS-8150710-SP | 6 | 6 |
| D2424-245-E00 | 2 | 23 | M9637-110-000 | 24 | 37 | SS-5060310-SP | 2 | 44 | SS-8150710-SP | 6 | 12 |
| D2425-245-E00 | 2 | 22 | M9637-110-000 | 25 | 5 | SS-5110710-SP | 16 | 41 | SS-8150710-SP | 14 | 44 |
| D2426-245-E00 | 2 | 20 | M9640-110-000 | 24 | 38 | SS-6060210-SP | 16 | 6 | SS-8150710-SP | 18 | 61 |
| D2427-245-E00 | 10 | 67 | M9640-110-000 | 25 | 6 | SS-6081210-SP | 16 | 40 | SS-8150710-TP | 16 | 48 |
| D2428-245-E00 | 10 | 74 | | | | SS-6090810-SP | 10 | 66 | SS-8150710-TP | 16 | 60 |
| D2429-245-E00 | 2 | 18 | NM-6040000-SN | 10 | 60 | SS-6090910-TP | 8 | 26 | SS-8150830-SP | 16 | 59 |
| D2430-245-EA0 | 10 | 70 | NM-6050001-SE | 21 | 13 | SS-6092120-SP | 2 | 2 | SS-8150830-SP | 16 | 61 |
| D2431-245-E00 | 10 | 5 | NM-6050001-SE | 21 | 17 | SS-6110480-SP | 20 | 24 | SS-8151150-SP | 6 | 36 |
| D2432-245-E00 | 10 | 37 | NS-6060350-SP | 4 | 53 | SS-6110710-TP | 12 | 39 | SS-8151150-SP | 8 | 2 |
| D2432-245-E00 | 10 | 42 | NS-6090310-SP | 18 | 37 | SS-6111140-SP | 4 | 43 | SS-8151230-SP | 10 | 39 |
| D2432-245-E00 | 10 | 63 | NS-6110310-SP | 4 | 9 | SS-6111140-SP | 20 | 22 | SS-8151230-SP | 10 | 45 |
| D2433-245-E00 | 10 | 6 | NS-6110350-SP | 4 | 44 | SS-6121050-SP | 16 | 73 | SS-8151230-SP | 10 | 48 |
| D2434-245-E00 | 10 | 33 | NS-6150310-SP | 12 | 35 | SS-6121210-SP | 14 | 42 | SS-8151230-SP | 10 | 50 |
| D2434-245-E00 | 10 | 43 | NS-6150430-SP | 24 | 41 | SS-6151220-SP | 16 | 55 | SS-8151230-SP | 10 | 58 |
| D2434-245-E00 | 10 | 56 | NS-6150430-SP | 25 | 9 | SS-6151780-SP | 12 | 34 | SS-8151550-SP | 6 | 1 |
| D2435-245-E00 | 2 | 21 | NS-6620310-SP | 6 | 54 | SS-7060310-SP | 10 | 8 | SS-8151550-SP | 6 | 15 |
| D2436-141-E00 | 10 | 19 | NS-6620310-SP | 12 | 16 | SS-7060610-SP | 2 | 48 | SS-8151550-SP | 6 | 27 |
| D2436-245-E00 | 2 | 19 | NS-6620310-SP | 18 | 3 | SS-7080510-TP | 6 | 48 | SS-8151550-SP | 6 | 75 |
| D2441-141-E00 | 10 | 18 | NS-6620310-SP | 25 | 13 | SS-7080510-TP | 18 | 66 | SS-8151550-SP | 10 | 36 |
| D2464-555-B00 | 14 | 8 | NS-6660430-SP | 12 | 27 | SS-7080520-SP | 16 | 28 | SS-8151780-SP | 6 | 2 |
| D3168-555-H0B | 4 | 5 | NS-6680320-SP | 16 | 23 | SS-7081310-SP | 20 | 16 | SS-8660530-TP | 6 | 19 |
| D3310-555-D00 | 21 | 20 | NS-6680320-SP | 16 | 56 | SS-7090520-SP | 2 | 36 | SS-8660530-TP | 10 | 32 |
| D3410-241-E00 | 18 | 7 | | | | SS-7090910-SP | 6 | 47 | SS-8660610-TP | 6 | 21 |
| D3501-241-E00 | 18 | 14 | PS-0400182-K0 | 16 | 75 | SS-7090910-SP | 18 | 35 | SS-8660610-TP | 6 | 66 |
| D3501-245-E00 | 18 | 44 | PS-0600241-00 | 18 | 11 | SS-7090920-SP | 6 | 62 | SS-8660610-TP | 6 | 71 |

NUMERICAL INDEX OF PARTS

索引

| Part No. 品番 | Page 頁 | Ref. No. | Part No. 品番 | Page 頁 | Ref. No. | Part No. 品番 | Page 頁 | Ref. No. | Part No. 品番 | Page 頁 | Ref. No. |
|----------------|-----------|-------------|----------------|-----------|-------------|----------------|-----------|-------------|----------------|-----------|-------------|
| SS-8660612-TP | 10 | 41 | 111-81906 | 21 | 2 | | | | | | |
| SS-8660810-TP | 6 | 65 | 118-49502 | 22 | 6 | | | | | | |
| SS-8660810-TP | 6 | 68 | | | | | | | | | |
| SS-8660810-TP | 6 | 73 | | | | | | | | | |
| SS-8660810-TP | 14 | 49 | | | | | | | | | |
| SS-8661040-TP | 14 | 50 | | | | | | | | | |
| SS-8680540-SP | 6 | 28 | | | | | | | | | |
| SS-8680730-SP | 6 | 29 | | | | | | | | | |
| SS-8681650-TP | 6 | 33 | | | | | | | | | |
| SS-8701042-TP | 16 | 44 | | | | | | | | | |
| SS-9091010-SP | 10 | 73 | | | | | | | | | |
| SS-9111010-SP | 14 | 7 | | | | | | | | | |
| SS-9111010-SP | 18 | 39 | | | | | | | | | |
| SS-9151540-SR | 19 | 8 | | | | | | | | | |
| SS-9161610-SP | 12 | 21 | | | | | | | | | |
| SS-9182010-SN | 19 | 16 | | | | | | | | | |
| TA-0500601-MO | 2 | 4 | | | | | | | | | |
| TA-0550604-RO | 2 | 45 | | | | | | | | | |
| TA-0750704-RO | 2 | 41 | | | | | | | | | |
| TA-1050504-RO | 2 | 5 | | | | | | | | | |
| TA-1120804-RO | 2 | 51 | | | | | | | | | |
| TA-1250406-RO | 2 | 37 | | | | | | | | | |
| TA-2100904-RO | 2 | 42 | | | | | | | | | |
| WP-0371026-SD | 10 | 3 | | | | | | | | | |
| WP-0371026-SD | 10 | 65 | | | | | | | | | |
| WP-0450000-SD | 12 | 12 | | | | | | | | | |
| WP-0501016-SC | 20 | 4 | | | | | | | | | |
| WP-0501016-SC | 20 | 18 | | | | | | | | | |
| WP-0501016-SD | 10 | 72 | | | | | | | | | |
| WP-0501016-SD | 14 | 2 | | | | | | | | | |
| WP-0501016-SD | 14 | 6 | | | | | | | | | |
| WP-0501016-SD | 14 | 18 | | | | | | | | | |
| WP-0501016-SD | 25 | 15 | | | | | | | | | |
| WP-0621016-SD | 14 | 12 | | | | | | | | | |
| WP-0621016-SD | 18 | 9 | | | | | | | | | |
| WP-1702600-SO | 21 | 19 | | | | | | | | | |
| WS-0411002-KN | 10 | 2 | | | | | | | | | |
| WS-0510002-KN | 21 | 16 | | | | | | | | | |
| WS-0631510-KP | 14 | 11 | | | | | | | | | |
| WS-1643202-KR | 21 | 21 | | | | | | | | | |
| WT-0530002-KS | 10 | 71 | | | | | | | | | |
| WZ-1052010-KP | 14 | 51 | | | | | | | | | |
| 100-39451 | 24 | 23 | | | | | | | | | |
| 101-19006 | 14 | 4 | | | | | | | | | |
| 101-19204 | 14 | 5 | | | | | | | | | |
| 101-19303 | 14 | 3 | | | | | | | | | |
| 101-19402 | 14 | 36 | | | | | | | | | |
| 101-19709 | 14 | 28 | | | | | | | | | |
| 101-19907 | 14 | 27 | | | | | | | | | |
| 101-20004 | 14 | 21 | | | | | | | | | |
| 101-24204 | 4 | 7 | | | | | | | | | |
| 101-26324 | 18 | 31 | | | | | | | | | |
| 101-26803 | 18 | 49 | | | | | | | | | |
| 103-13708 | 6 | 41 | | | | | | | | | |
| 103-13906 | 12 | 25 | | | | | | | | | |
| 103-14003 | 12 | 26 | | | | | | | | | |
| 103-14201 | 12 | 28 | | | | | | | | | |
| 103-14508 | 12 | 31 | | | | | | | | | |
| 103-20059 | 4 | 8 | | | | | | | | | |
| 103-20075 | 4 | 3 | | | | | | | | | |
| 103-20109 | 4 | 14 | | | | | | | | | |
| 103-20505 | 4 | 10 | | | | | | | | | |
| 103-20703 | 4 | 15 | | | | | | | | | |
| 103-21107 | 4 | 26 | | | | | | | | | |
| 103-21701 | 18 | 22 | | | | | | | | | |
| 110-23702 | 19 | 6 | | | | | | | | | |
| 110-23801 | 19 | 7 | | | | | | | | | |
| 110-24403 | 19 | 5 | | | | | | | | | |
| 111-81500 | 21 | 14 | | | | | | | | | |
| 111-81559 | 21 | 1 | | | | | | | | | |
| 111-81609 | 21 | 10 | | | | | | | | | |
| 111-81708 | 21 | 15 | | | | | | | | | |
| 111-81757 | 21 | 9 | | | | | | | | | |
| 111-81807 | 21 | 5 | | | | | | | | | |

JUKI

JUKI CORPORATION

HEAD OFFICE

2-1, 8-CHOME, KOKURYO-CHO,
CHOFU-CITY, TOKYO 182, JAPAN

BUSINESS OFFICE

23-3, KABUKI-CHO 1-CHOME,
SHINJUKU-KU, TOKYO 160, JAPAN

CABLE : JUKI TOKYO

TELEX : J22967, 232-2301

PHONE : 03(3205)1188, 1189, 1190

JUKI 株式会社

〒182 東京都調布市国領町8-2-1
TEL. 03-3480-1111(代表)

工業製品販売本部
TEL. 03-3480-1113(ダイヤルイン)

お買い求め、ご相談は
To order or for further
information,
please contact :

*このパーツリストは商品改良のため予告なく変更する事があります。

* The description covered in this parts list is subject to change for improvement of the commodity without notice.

*このパーツリストは、1991年2月現在の商品仕様で編集・印刷したものです。

* This parts list is edited and printed in accordance with the product specifications as of February 1991.